

**SEPTEMBER  
2007**

VOLUME 15, NUMBER 3

**BRICKLAYERS & ALLIED CRAFTWORKERS LOCAL 1 MINNESOTA/NORTH DAKOTA**

# QUARTERLY UPDATE

- Bricklayers
- Stone Masons
- Tile Layers
- Marble Masons
- Terrazzo
- Blocklayers
- Finishers
- Shopmen
- Cement Masons
- Pointers - Cleaners - Caulkers
- Concrete Products Specialists

## INSIDE

**IMI:** 3 Local 1 members going to national competition/**3**

**GOLF:** Here are tournament winners/**10**

**KEEPING UP:** Mark your calendars/**11**

**PEOPLE:** Have trowels, will travel/**12**



With the arm of a forklift lowering new rebar rods, teams of bricklayers assemble walls. To the left, one man pours concrete while, to his right, another uses a vibrator to compact it. To the right, workmen are placing rods into Styrofoam forms, preparing to pour concrete for a new section of wall.

## KEEP IN TOUCH

### LOCAL TELEPHONE

612-379-2966

### OUTSTATE & N. DAK.

1-800-257-8636

### BAC INTERNATIONAL UNION

1-888-880-8222

### FAX

612-379-8754

### INTERNET

### RESOURCES

General Information:  
BAC1MN-ND.org

Apprenticeship and  
Training:

BACtraining.org

or phone

651-487-5500

## BENEFITS

Check the Zenith Administrators Web site, [www.zenithtpa.com](http://www.zenithtpa.com) or phone either 651-256-1801 or 1-800-879-4412

## BURNSVILLE THEATER

# New ICF construction used

**A** NEW FORM of construction is taking shape – a very tall shape – in Burnsville. Union bricklayers are working with a building medium that Business Agent Terry Wong

compares to Lego blocks.

ICF (Insulated Concrete Forms) construction involves Styrofoam modules snapped together and threaded with

*Please turn to BURNSVILLE on Page 6*

**Y**OU CAN'T pick up the newspaper these days without seeing some article that reports on the effects of the growing cost of healthcare.

The Board of Trustees of the Health Fund has needed to deal with the challenges of providing top-quality healthcare for participants and their families, while protecting the assets of the trust and capping increases in the contribution rate for health coverage.

The Board, responding to the advice of



**JIM LUNDQUIST  
PRESIDENT/SECRETARY-  
TREASURER**

## Health Fund switching to Medica PPO

experts in health care finance, has decided to put the fund on course for a solid future by attacking the “cost drivers” in healthcare. All

*Please turn to LUNDQUIST on Next Page*

# LUNDQUIST/Health Fund switching to Medica

*Continued From Page 1*

participants will benefit from this approach. Consider the following:

- 80% of healthcare dollars are spent by 20% of health plan participants; these participants need specific programs and guidance to get the best quality care and prevent hospitalizations.



- 50% of healthcare dollars are the result of our behavior—that is, self-inflicted disease. We all need access to programs

such as weight control, smoking cessation and stress management to help keep us from becoming health care statistics.

- High-quality healthcare is much less expensive than poor healthcare, in that it suppresses future health care needs. We seek the best quality for the participants of our fund.

- Providing participants with the resources and tools for obtaining the best possible care, counseling and healthcare outcomes will suppress demand for more expensive, future healthcare needs. The fund seeks to provide these tools.

Therefore, the Board of Trustees has decided that effective Dec. 1, 2007, the Minnesota and North Dakota Bricklayers and Allied Craftworkers Health Fund will begin using Medica's LaborCare network as its Preferred Provider Organization (PPO) network. Medica's LaborCare Network will replace the BlueCross BlueShield network currently in place.

The Fund's Board of Trustees conducted a detailed search and analysis

**The Board of Trustees is sponsoring a very important meeting for all participants/spouses to introduce these programs. We will meet at the Prom Center, 484 Inwood Ave N., Woodbury, MN 55128 (telephone 651-501-8191) at 10 a.m. Saturday, Oct. 27, to fully brief all involved about the new programs that will form the core of our health care plan. Please plan on attending with your spouse.**

to determine the PPO network that would best meet the participants' needs. Medica has designed a comprehensive program for the Fund that should result in improved service and provide participants with exciting new programs to help manage their healthcare needs. Some of the new services that will be available to Fund participants through LaborCare include:

Regional access to healthcare providers through the LaborCare network (Minnesota, Wisconsin, North and South Dakota). The network includes 465,000 primary and specialty care providers and 4,200 hospitals. For services provided outside of the LaborCare network, Medica has an arrangement with Multiplan, a PPO network with nationwide coverage.

- **Fit Choices:** Participants will be eligible for a monthly discount of up to \$20 per individual or \$40 per household when using a participating fitness center at least eight days per month.

- **MyHealthManager:** Participants will be able to take an online health risk assessment and receive an immediate wellness score, with recommendations on where and how to

improve their health. There will be an opportunity to create a personal homepage based on a participant's wellness status, with fitness, nutrition, healthy living and medical information updates. Interactive tools, resources and health management programs will help guide participants in health improvement. Participants who participate in and complete health improvement programs will be eligible for rewards.

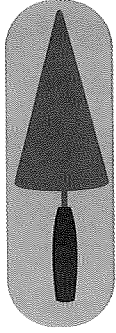
- **Call Link Nurse Line:** Participants may call this toll-free nurse line to speak to a registered nurse with questions on choosing appropriate medical care, medication questions, disease prevention and general health information. The service also provides 1,100 pre-recorded health information titles, covering a broad range of topics such as aging well, mental and emotional health, weight control, healthy living and general health concerns. Call Link nurses are available 24 hours per day, every day of the year.

- **Disease Management programs** for patients with pediatric asthma, diabetes, coronary artery disease and congestive heart failure. The goal of Disease Management programs is to improve health and reduce complications through early intervention and monitoring. Participants will have the opportunity to work with a nurse to help manage their chronic conditions, and coordinate care with their healthcare providers.

The Board of Trustees looks forward to working with Medica and the Fund participants in the introduction of these new programs. By working together, we can have the healthiest participants, and the lowest costs, available in health care today and in the future.

**“...the Board of Trustees has decided that effective Dec. 1, 2007, the Minnesota and North Dakota Bricklayers and Allied Craftworkers Health Fund will begin using Medica's LaborCare network as its Preferred Provider Organization (PPO) network. Medica's LaborCare Network will replace the BlueCross BlueShield network currently in place.”**

– *Jim Lundquist, President / Secretary-Treasurer*



## STONE APPRENTICE COMPETITION SENDS FOUR TO NATIONALS

*2 Minnesotans, in stone and marble, to compete*

The BAC/IMI Stone Apprentice Competition held July 20-21 at the Local #1 MN/ND Training Center in St. Paul saw the best apprentice stonemasons in a 14-state region compete for the right to advance to the national event through a written exam and a timed hands-on competition. The national event will be held at

To learn more about the International Masonry Institute, visit us at [www.imiweb.org](http://www.imiweb.org) on the Internet.

IMI's new National Training Center in

Bowie, MD, Sept. 20-21. The national competition will have participants from all the masonry crafts competing for prizes and national recognition.

Winning top honors in the regional competition was Randal Leigh, from Wisconsin District Council #13. Randal is planning to be married in September, making 2007 truly a memorable year for him. Second place was captured by Scott Neuwirth, also from Wisconsin District Council #13. Minnesota's entry, Eric Brichacek, from Local 1 MN/ND, placed third, winning him the right to go on to nationals. Fourth place was captured by Matthew Fronk from Wisconsin District Council #13.

Since only four could advance to nationals, one apprentice, Chris Hoagland from Northern Ohio Area District Council, was excluded from moving on to the final round. Hoagland is a first-year apprentice and Local 1 Apprenticeship Coordinator Mark Wickstrom noted that he should be recognized for his courage in competing as a first-year apprentice.

"It is the apprentice that has the can-do attitude that Chris exhibited that is a quality that we need to seek in

Please see photos on Page 7

our new recruits. I am sure we will be hearing more about the successes of this young man as his career continues". In the words of Mike Papp, IMI's regional training director, "All the contestants here are winners."

Each participant had to build the same element on a block backup wall constructed in advance. The base course consisted of a four-foot wall and corner in ashlar limestone with granite wall panels mounted above. Each contestant was provided with necessary materials, but the contestants were challenged to cut the pieces to length and dress the faces of the stones with hammer and chisels. The granite panels were kerfed, but contestants had to bend and install the appropriate anchors. Finally, an area of granite pavers was installed surrounding the base, set in a dry-pack mortar.

Points were given for such criteria as plumb and level, correct height and layout, correct ashlar pattern and overall aesthetics. A second project involved doing a field quirk miter cut and inserting complex anchors, one of which was a lace anchor. The projects all had to be completed within the limited time period of 5 1/2 hours.

Judges for the regional competition were Bob Steinbring, Harold Stener, Merwin Perkins and Gerry Jenniges, all members of BAC Local 1 MN/ND. There was also one judge, Rick Lawson, who was representing Wisconsin District Council #13. The combined experience of the judges totaled more than 120 years. Jenniges was a winner in the original masonry competition first conducted in 1958, and was invited back to be recognized and to observe the last BAC/IMI competition held in 2003 at the National Building Museum in Washington, DC.

A Minnesota marble mason apprentice, Piotr Rapanovich, also won the right to advance to nationals in his craft by capturing second place in the regional marble competition recently held in Chicago. A native of eastern Europe, Rapanovich started with the Local 1 MN/ND tile program, but his skill in setting stone was soon recognized and he moved into the bricklayer program. There, he has been able to refine his skills and is completing his third year of apprenticeship.

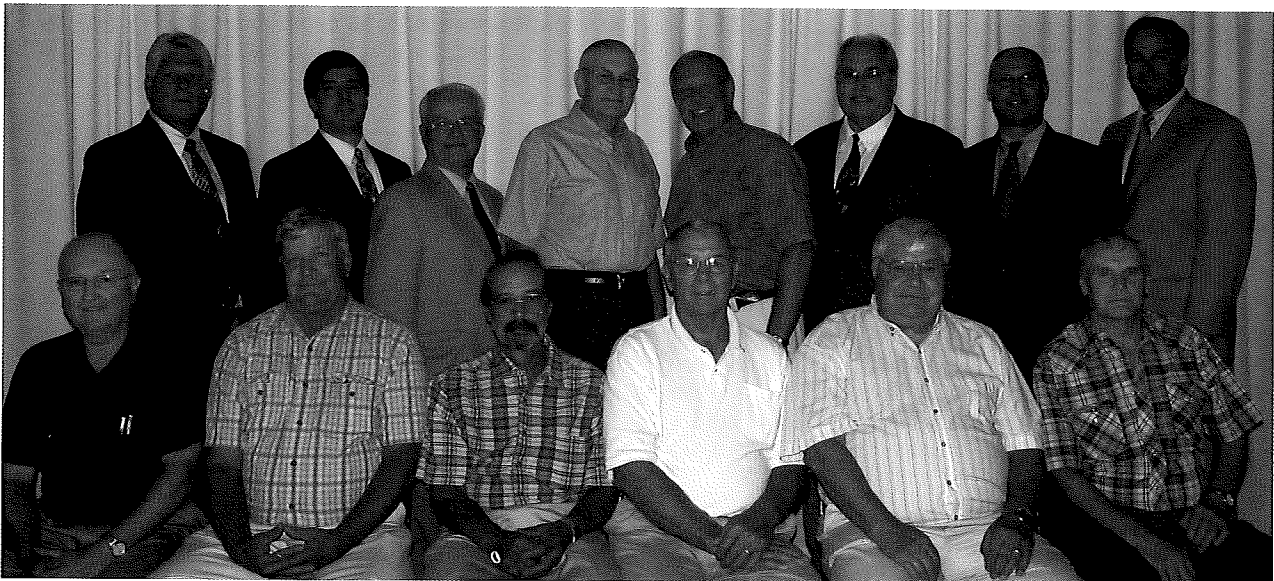
- Olene Bigelow, Minnesota IMI Area Director

**MINNEAPOLIS-ST. PAUL - Members celebrating 25-, 40- and 50-year anniversaries were honored at a metro-area Gold Card Luncheon held July 12 at Prom Center, Oakdale.**



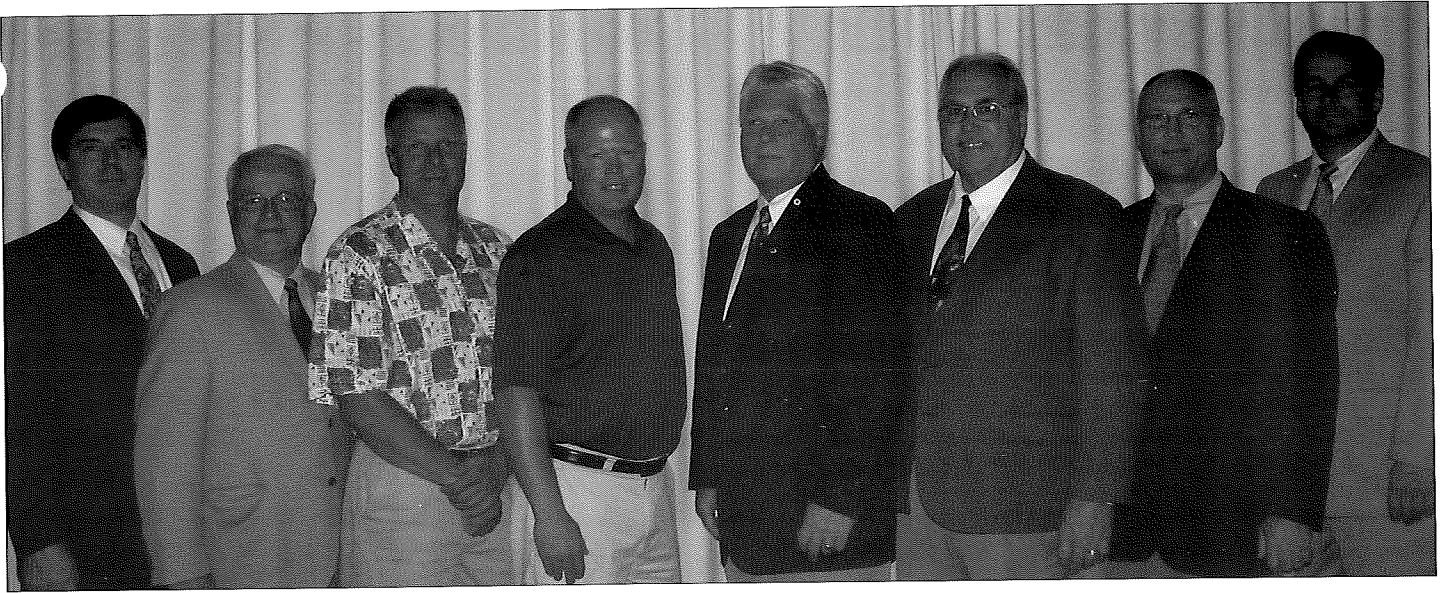
**Metro 50-year members**

Front row, left to right: Robert LaPlante, Ed Halonen, Leroy Monette, Duane Larson, Pete Glieden and BAC Local 1 MN/ND vice presidents Roger Buirge and Mike Hawthorne. Back row, left to right: Local 1 President Jim Lundquist, Joe Ondarko, John Emerson, Ken Schroeder, James Alfson, BAC International Vice President Gerald O'Malley and Regional Director Henry Kramer, and Local 1 Executive Vice President Mike Cook.



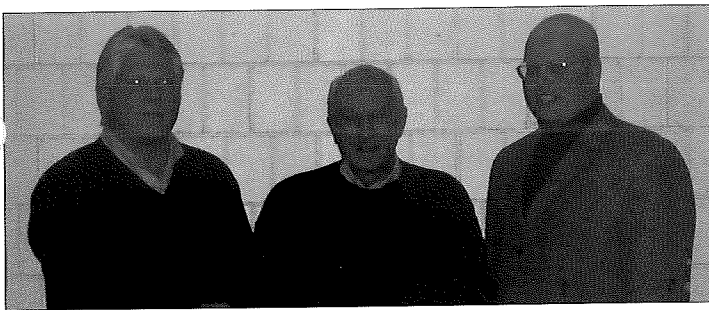
**Metro 40-year members**

Front row, left to right: James Larson, David Christy, Dave Royce, Dennis Trenda, Matt Jacobs and Milo Heddan. Back row, left to right: BAC Local 1 MN/ND President Jim Lundquist, Local 1 vice presidents Mike Hawthorne and Roger Buirge, Milton Boser, Allan Gillan, BAC International Vice President Gerald O'Malley and Regional Director Henry Kramer, and Local 1 Executive Vice President Mike Cook.



### Metro 25-year members

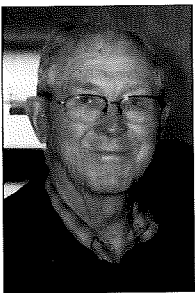
Left to right: BAC Local 1 MN/ND vice presidents Mike Hawthorne and Roger Buirge, Mark Smith, Scott Erlandson, Local 1 President Jim Lundquist, BAC International Vice President Gerald O'Malley and Regional Director Henry Kramer, and Local 1 Executive Vice President Mike Cook.



### St. Cloud 50-year member

ST. CLOUD - Fifty-year Gold Card member Eugene Backes (center) was honored at the Gold Card dinner held April 7 at the Eagles Club. BAC Local 1 MN/ND President Jim Lundquist is shown to his right, Vice President Mike Ganz to his left.

## George Backes: 'Be a good union member...It'll help your trade'



George Backes, (left) a longtime union leader from St. Cloud, may hold a Local 1 record for number of locals represented at the same time. When he retired in 1988, he was business agent for four locals at once: #4 in St. Cloud, #14 in Wilmar, #11 in Mankato and #22 in Windom. He also served as secretary for #4-St. Cloud from 1961 until he retired.

His years of endless driving, from 1973 to 1988, were a time of prosperity for the trade, Backes said. "There was a lot going on. It was boom years. We really signed up a lot of bricklayers during those years."

Backes and his wife, Gloria, brought up six children, with Backes juggling a heavy workload. "I did all the secretarial work myself, for five locals," he said. "All the correspondence got done during the evenings. I was on the road during the day."

A native of Stearns County, Minnesota, Backes served in the U.S. Navy from 1945 to 1947, seeing a good bit of the South Pacific and Mediterranean. When he came home, he attended bricklayer training at Camp Ripley, in Little Falls, Minn. "I don't know how they got in there, but they had a couple of barracks and used them as a classroom," he said. His brother, Eugene Backes, also went into the trade, and in April was awarded his 50-year Gold Card.

Two of Backes' sons now live in Alaska, which meant that a lifelong love of hunting and fishing moved north, with George and Gloria making about a dozen trips to Alaska since 1988.

Backes is in poor health now; he has lung cancer. Asked for advice to younger members, Backes said: "Be a good union member. It'll help your trade."

# BURNSVILLE THEATER/New construction used

*Continued From Page 1*

rebar to form the framework for eight inches of poured concrete. Each wall, remaining clad in insulating Styrofoam, forms the support for the next level, and so it climbs.

In Burnsville, where a large theater is under construction, the ICF structure will climb to 48 feet, one of the largest structures built so far with the new technique. The white Styrofoam-clad structure already looms over Burnsville Center, near the intersection of I-35W and County Road 42. The theater will house 14 screens plus a wraparound-screen Imax auditorium. Clad in block and brick and finished inside with sheetrock, it is scheduled to be finished by May 2008.

Gresser Concrete and Masonry, Eagan, is contractor for the job. About 16 BAC Local 1 MN/ND members have been working there.

Wong, the metro-area business agent who has been keeping an eye on this job, said union bricklayers had started out “a little skeptical” of the ICF building technique, but “now I think they’ve got a grasp on the whole procedure and how it works.”

“Guys who were used to having that trowel in their hand, now they have a level and a handsaw,” Wong said. The tools might sound like carpenters’ tools, he said, but despite the difference in framing material “it is block, and we know what we’re doing that way.”

Lightweight Styrofoam in place of heavy block has lightened up the workload, Wong said. Bricklayers who had been used to ending a shift bone-tired from lifting blocks all day are finding they’re turning out more square footage with less labor, and actually end the day with some energy left over.

Work style is different too. The bricklayers work in tight-knit teams, with one person pouring concrete, a second following him with a vibrator to settle it, and a third placing vertical rods to hold the next lift. Completed pours are checked with a level and adjusted with turnbuckles to keep the walls precisely plumb.

“It’s a very, very secure wall,” Wong said. Traditional block walls have reinforcing rod placed at 32-inch to four-foot intervals. ICF construction places rebar at 16-inch intervals. The insulating factor is better, he said, and because of the layers of Styrofoam, sound insulation – particularly important in a theater – is much better.

The outlook is that there will be more projects like this, and our aim is to secure them as BAC work. BAC Local 1 MN/ND is gearing up to help members learn the new ICF construction technique. Journeyman Upgrade classes will be offered at the BAC Apprenticeship Training Center, 415 Minnehaha Ave., St. Paul, on Friday, Oct. 5, and again Friday, April 4, 2008. Call 651-487-5500 to register.



**W**ith scaffolding and partially-completed walls behind him, Gresser Foreman Greg Haas, center, talks with BAC Local 1 MN/ND Apprenticeship instructors Dan Quinlan, left, and Dave Mensing, right.



**T**wo layers of 2 1/2-inch-thick Styrofoam are held together by polypropylene ties with rebar guides and furring strips to attach drywall or exterior finish. Poured concrete sets up eight inches thick, with rebar at 16-inch intervals. The Styrofoam remains as insulation.

**T**he wall of a new movie theater in Burnsville takes shape, with scaffolding keeping pace as the structure climbs toward 48 feet. Walls are clad with white Styrofoam, to be finished with block or brick on the exterior, sheetrock on the interior.

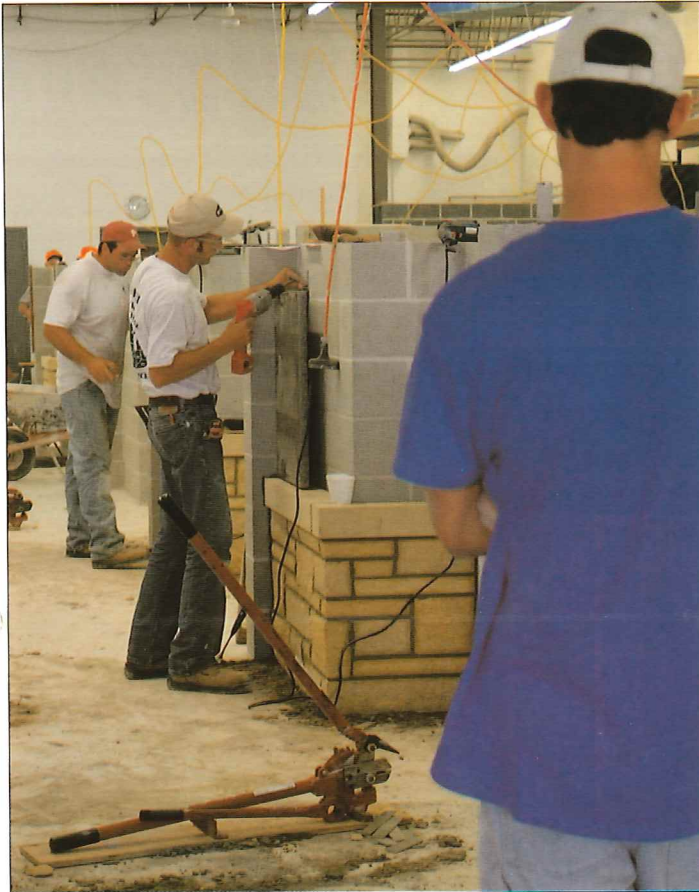


# 'All the contestants were winners.'

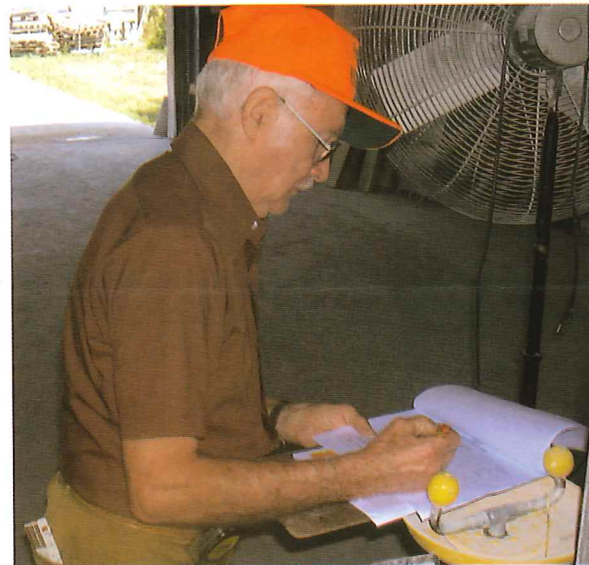
– Mike Papp,  
IMI's regional training center director



Contest participants, left to right, were Christopher Hoagland, Randal Leigh (1st place winner), Eric Brichacek (3rd place), Scott Neuwirth (2nd place) and Matthew Fronk (4th place).



Contestants in the BAC/IMI Stone Apprentice competition are hard at work.



Local 1 retiree Harold Stener served as a judge.

First-place winner Randal Leigh stands beside the wall he built.



**Please see story on Page 3.**

## M I L E S T O N E S

### NEW MEMBERS

**We welcome these new members...**

Peter Arachtingi  
Shannon Azure  
Kenneth Baillargeon  
Robert Bakken  
Aarron Ballinger  
Chad Bedard  
George Bertino  
Keven Boese  
Todd Bolstrom  
Noah Brisky  
Mark Brown  
Ryan Brown  
Keith Bruce

Cassidy Carlson  
Ryan Christopherson  
Richard Clemens  
Mitchell Dahlvang  
Michael Drentlaw  
Kegan Drinkwine  
Elise Eberhardy  
Rick Eastlick  
James Ficek  
Jordan Gallagher  
Victor Granados  
Shawn Greene  
Scott Halverson  
Andrew Helgeson  
Kevin Hendrickson  
Rodney Ingalls  
Bennet Kalmon

John Keske  
Zachary Koury  
Tyler Krein  
James A. Larson  
Jose Lopez  
Thomas Maruska Jr.  
Thomas Milburn  
Robert Miller  
Dale Miller  
Hector Mondragon  
Duane Mulholland  
Brian Newton  
Joseph Patterson  
Tyler Peterson  
Gregory Peterson  
Wade Prestegard  
Kyle Purinton

Matthew Roberts  
Edward Schmitz  
Anatoliy Siruk  
Igor Slobodyanyk  
Douglass Snyder  
Steven Stanke  
Jeffrey Steele  
Daniel Strand  
Nathaniel Tickner  
Paul Valentyn  
Jordan Wear  
Michael Weathermon  
Wes Williams  
Jason Wisner  
James Zemien



**We are sorry to report the deaths of these members who are listed under their pre-merger locals.**

MINNESOTA  
#1MN—St. Paul  
Steven D. Klar  
#2MN—Minneapolis

Wallace D. Grabinger  
John C. Johnson  
Victor Kehren  
Francis L. Kraft  
SereL Pfuhl  
Clayton J. Rivers  
#11—Mankato  
Donald D. Swedberg

#15—Brainerd  
Carl R. Kading  
#18—Metro Tile Layers  
Walter M. Olson  
NORTH DAKOTA  
#2—Minot  
Michael B. Lucy

### DECEASED MEMBERS

## P E O P L E

### *Iraq war vet honored*

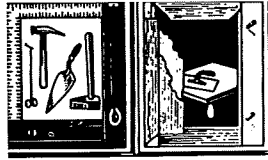
Bricklayer Paul Long (left), a veteran of the Iraq war, received a congratulatory wristwatch from BAC Local 1 MN/ND President Jim Lundquist at the July 28 metro-area Golf Tournament. Long, a technical sergeant in the U.S. Air Force Reserve, has served two deployments to the Iraq war zone. He was stationed in Saudi Arabia from May through September 2002, and in Iraq for six months ending May 16, 2007. Long works for Western Waterproofing, Minneapolis.





# Apprentices qualify for national contest

**B**AC Local 1 MN/ND will send three of its apprentices to the National Apprenticeship Contest to be held Sept. 20-22 at the National Training Center in Bowie, Md. The three have competed in the North Central Regional Craft Competitions and earned the right to compete in the National Contest.



## APPRENTICESHIP CORNER

*For more information on any of these programs, contact the BAC Apprenticeship Training Center at 651-487-5500.*

Members who attend any of these classes will receive a stipend of \$150 per 8-hour session from the Worker Readiness Fund and \$75 for a 4-hour session. Fall dates and topics are:

- Oct. 5: ICF (Insulated Concrete Forms)
- Oct. 19: Foreman Training
- Oct. 26: Foreman Training
- Nov. 2: Stone Patching
- Nov. 16: First aid / CPR
- Nov. 30: Basic Bricklaying Skills
- Dec. 21: Grout Certification

Classes will continue through Spring 2008, with class topics to include welding, flashing, basic bricklaying, ashlar stone, and marble and granite.

They are:

- Piotr Rapanovich, marble mason, employed by Twin City Tile & Marble, St. Paul, Minn.
  - Eric Brichacek, stonemason, employed by Johnson-Nelson Masonry, Ashby, Minn.
  - Michael Smith, bricklayer, employed by Gresser Concrete & Masonry, Eagan, Minn.
- We wish them well.

The spring schedule will be published in December's Quarterly Update.

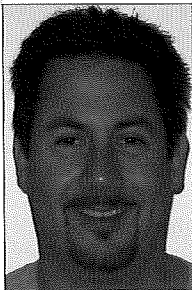
## Tile reps to speak

Representatives of the tile industry will present informative lectures throughout the fall and spring. Originally created for Tile Finisher and Tile Layer Apprentice classes, the lectures also serve as journeyman upgrade classes paying a stipend of \$75 per four-hour class.

All tile members are welcome to attend. Scheduled this fall, all from 4 to 8 p.m. Wednesdays, are:

- Sept. 5: Larry Keller, of C-Cure.
- Sept. 12: Pat Armitage, of Mapai.
- Oct. 3: Clint Anna, of Merkrete.
- Nov. 7: Derick Cooper, of National Applied Construction Products.
- Dec. 5: Cory Stevens, of Schluter Systems.

## New tile training coordinator hired



**Rick Martagon**

Rick Martagon, an experienced teacher and tilesetter, has joined the fulltime staff at the BAC Local 1 MN/ND Apprenticeship Training Center. He was named Tile Training Coordinator July 16.

Rick has been a part-time teacher at the Training Center for six years, while also working as a project supervisor, foreman and installer first for Grazzini Brothers, Eagan, and then for Harrison Tile, Little Canada.

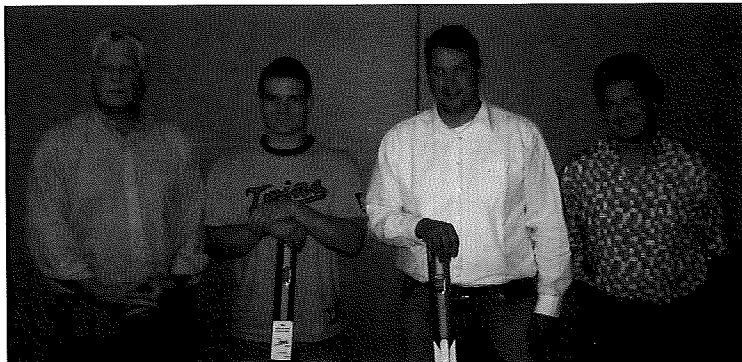
## OSHA-10 safety training scheduled

OSHA-10 classes will be offered in November and December for members who need to obtain the federal safety training certification.

Classes last two days each, pay a stipend of \$100 per day, and are scheduled for Fridays and Mondays, Nov. 9 and 12, and Dec. 7 and 10. Classes are held at the Apprenticeship Training Center, 415 Minnehaha Ave., St. Paul.

## Upgrade classes to be offered

A series of Journeyman Upgrade classes will be offered during the 2007-08 training year. All classes will be held from 7 a.m. to 3:30 p.m. on Friday.



**Rochester-Completing apprentices were honored at Rochester's Gold Card Dinner held June 1 at the Rochester Marriott Hotel. Shown, left to right, are BAC Local 1 MN/ND President Jim Lundquist, completing apprentices Steve Johnson and John Ball, and Business Representative Mark Caron.**

# GOLF TOURNAMENT WINNERS



**Winning Foursome** of the 2007 BAC Local 1 Golf Tournament, left to right, are Tom Kraft, Dallas Smith, Chester Marco and Brian Kraft. The tournament was held July 28 at Pheasant Acres Golf Club, in Rogers.

**RETIREMENT, EDUCATIONAL, PERSONAL INVESTMENTS**

Thomas Ottman  
Feltl and Company  
400 Village Center Dr., Suite 200  
North Oaks, MN 55127

**SPECIAL – NO SALES CHARGE  
AND PRICING FOR LOCAL 1 MEMBERS**

- Roth IRA's • Regular IRAs
- College 529 Savings Plans • Retirement Rollovers
- Office: 651-766-1286; Cell: 612-805-1180,  
Toll Free: 800-826-6025

## The Union Shop built on trust

- Complete financial services
- Free online banking & bill pay
- 24-hour lending center
- Mortgages, Home Equity and vehicle loans



Minnesota  
Building Trades  
Federal Credit Union

[www.mbtfcu.com](http://www.mbtfcu.com)  
763-315-3888

**SIEBEN, GROSE,  
VON HOLTUM & CAREY, LTD**  
"KNOW YOUR RIGHTS"

*Helping injured people since 1952.*

- Car, Truck & Motorcycle Accidents • Medical Mistakes
- Workers' Compensation • All Personal Injuries

800 Marquette Ave., Suite 900  
Minneapolis, Minnesota 55402

**(612) 333-4500 • 1-800 4-RIGHTS**

[www.knowyourrights.com](http://www.knowyourrights.com)

**Real Estate, Wills, Trusts and Estate Planning/Administration**

Rosene, Haugrud & Staab, Chartered  
400 Robert St. N, Suite 1800, St. Paul, MN 55101

**PHONE: 651-227-6621 • FAX: 651-297-6642**

**EMAIL: [Mail@rhschtd.com](mailto:Mail@rhschtd.com)**

Our law firm has been General Counsel for BAC Fringe Benefit Funds in Minnesota since 1985. We are a full service firm, dedicated to providing quality legal services. Our firm has received an A. V. rating from Martindale-Hubbell (highest possible rating on legal ability and ethical standards.) Our practice area includes Real Estate, Wills, Trusts, and Estate Planning/Administration. For additional information or an appointment, please contact us.



**2007 – CHECK YOUR CALENDAR FOR IMPORTANT DATES**

Please clip the calendar and post it in a convenient spot so it's handy when you want to check meetings and events.

**Chapter #1 – Minneapolis-St. Paul**  
 312 Central Ave., Minneapolis: 4:30 p.m. Sept. 10, Nov. 12  
 Prom Center, 484 Inwood Ave., Oakdale: All Metro members, 7 p.m. Monday, Dec. 10

**Chapter #3 – Duluth-Hibbing**  
 Duluth, Duluth Labor Center: 7 p.m. Sept. 12, Dec. 12  
 Hibbing, Electricians Hall: 7 p.m. Nov. 14



**Chapter #4 – St. Cloud-Brainerd**  
 St. Cloud Labor Home, 1903 4th St. N.: 7 p.m. Sept. 5, Nov. 7, Dec. 5  
 Brainerd, American Legion: 7 p.m. Sept. 6, Dec. 6

**Chapter #11 – Mankato-New Ulm**  
 Mankato, Mankato Eagles Club: 7 p.m. Sept. 6, Dec. 6  
 New Ulm, American Legion: 7 p.m. Nov. 1

**Chapter #8 – Rochester-Faribault**

**BRICKLAYERS AND ALLIED CRAFTWORKERS LOCAL 1 MINNESOTA/NORTH DAKOTA**

**NOTES**  
*There will be no chapter meetings in October.*

Rochester, Rochester Labor Hall: 7 p.m. Sept. 10, Dec. 3  
 Faribault, VFW: 7 p.m. Nov. 5 (Faribault Bean Feed)

**Chapter #15 – Bemidji & North Dakota**  
 Bemidji, Elks Club: 7 p.m. Nov. 8  
 Bismarck, AmVets: 8 p.m. Sept. 13  
 Dickinson, St. Anthony Club, 8 p.m. Dec. 13  
 Fargo, Moorhead Travel Lodge: 7 p.m. Nov. 14  
 Grand Forks, N.D., E. Grand Forks American Legion, 7 p.m. Sept. 12, Dec. 12  
 Minot, VFW: 7 p.m. Nov. 15

**GOLD CARD DINNERS**  
 Gold cards will be mailed.

**Chapter #3 – Duluth-Iron Range**  
 Duluth area: Downtown Radisson, 6 p.m. Friday, Oct. 12  
 Iron Range area: Hibbing Knights of Columbus, 6 p.m. Saturday, Oct. 13

**OTHER EVENTS**

**Retirees Club Breakfast Meetings**  
 Jax Café, Minneapolis  
 9 a.m. Thursday, Sept. 20, Dec. 6

**Duluth-area Retirees meetings**  
 9:30 a.m., Miller Hill Mall food court, Duluth  
 First Wednesday of each month

**Executive Committee meeting**  
 312 Central Ave., Minneapolis  
 9 a.m. Friday, Oct. 5

**Semiannual Meeting** – All of Minnesota & North Dakota  
 312 Central Ave., Minneapolis  
 10 a.m. Saturday, Oct. 6

**Bricklayers and Allied Craftworkers Golf Tournament**  
 All members are welcome.  
 Chapter #3 area: Grandview Golf Links, Duluth  
 8 a.m. Saturday, Sept. 8



**F**OR THE MOST up-to-date labor news in Minnesota, visit the Workday Minnesota Web site – a cooperative effort of the Labor Education Service at the University of Minnesota and the working people of Minnesota and their labor organizations.

Updated daily, the labor news service features information about union and workplace activities; in-depth articles on history, the economy and other topics; materials on



labor for use in classrooms; and links to other sites. The news service also is interactive through a bulletin board on which readers can share information and viewpoints.

# QUARTERLY UPDATE

Quarterly Update is published four times a year by Bricklayers & Allied Craftworkers Local 1 Minnesota/North Dakota to communicate with its members.

**Postmaster:** Send address corrections to Bricklayers & Allied Craftworkers Local 1 Minnesota/North Dakota, 312 Central Avenue, Suite 328, Minneapolis, MN. 55414.

**President**.....Jim Lundquist  
**Editor**.....Merrily Helgeson  
**Design & Production**.....W. F. Cento

## QUARTERLY UPDATE

Bricklayers & Allied Craftworkers  
Local 1 Minnesota/North Dakota  
312 Central Avenue, Suite 328  
Minneapolis, MN 55414



Presorted  
First-Class Mail  
U.S. Postage  
**PAID**  
Permit #4140  
Mpls, MN

## PEOPLE

# HAVE TROWELS, WILL TRAVEL



**Business Agent Mike Ganz, shown here in the trailer he uses, travels throughout Minnesota and North Dakota giving high school kids a hands-on introduction to the bricklaying trade. Often, he says, kids aren't very interested when he explains in class, but when they get a trowel into their hands and start laying up a wall, it's a different matter. Ganz gets kids to work on an eight-foot-long wall, laying two courses of block, topped with a board, then two cours-**

**es of brick. "It gives them a real feel for it." He doesn't know if individual students actually enter the trade as a result of his school presentations, but "it's benefiting the union because kids might have uncles or dads or brothers. They'll bring the wage information back, and I'll get a call. 'Is this really what you're getting?'" Want Mike Ganz to visit a school near you? Call him at 612-865-0343 or e-mail [mjganz@hotmail.com](mailto:mjganz@hotmail.com).**