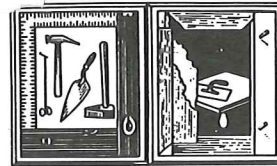


# QUARTERLY UPDATE

- Bricklayers
- Stone Masons
- Tile Layers
- Marble Masons



- Blocklayers
- Finishers
- Shopmen
- Cement Masons
- Pointers - Cleaners - Caulkers • Concrete Products Specialists

**A**LL MEMBERS of Bricklayers and Allied Craftworkers, Local Union #1 of Minnesota would like to extend a heartfelt welcome to their brothers and sisters from across the State of Minnesota, as the local BAC unions of Minnesota are merged into a single entity.



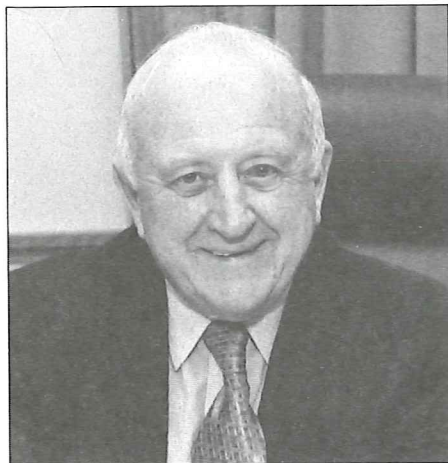
GARY GOBLIRSCH SAYS

## A warm welcome to new members as locals merge

Minnesota (Duluth Local #3 and Virginia-Hibbing Local #16) and southeastern Minnesota (Winona Local #7, Rochester Local #8, Faribault Local #10, Red Wing local #17 and Albert Lea Local #21) into Local #1 of

*Please turn to GARY on Page 2*

The International Union has, by order effective Jan. 1, 2001, merged the local unions formerly representing northwestern Minnesota (Crookston Local #12, Little Falls Local #13 and Brainerd Local #15), northeastern



DON SAMUELSON

## DON SAMUELSON

*New Minnesota Senate president keeps an eye on causes important to working people*

**D**ON SAMUELSON, A VETERAN Minnesota legislator with roots deep in Bricklayers union history, has been elected president of the Minnesota Senate.

Samuelson guesses he's one of only a dozen or so members of unions in the Legislature, and one of "two or three" members from the building trades. From his new corner office in the Capitol Building, Samuelson keeps an eye on causes he knows are important to working men and women.

*Please turn to SAMUELSON on Page 10*

### KEEP IN TOUCH

**LOCAL TELEPHONES**  
612-379-2966 AND 612-379-4230  
**OUTSTATE TELEPHONE**  
1-800-257-8636  
**FAX**  
612-379-8754

### INSIDE QUARTERLY UPDATE

**LUNDQUIST & COOK:** The BAC retiree picture gets better and better/**4-5**  
**BRIEFLY:** Vacation plan interest payments total \$250,000. ...Wartime Marine commander will address retirees/**6-7**  
**KEEPING UP:** Check those important dates/**12**



C O M M E N T A R Y

# GARY: Dues collection to be centralized...

*Continued from Page 1*

Minnesota.

These mergers are the culmination of the work undertaken by the International union back in the mid-1980's, when the IU first undertook "Project 2000." Across the country, small local unions have been merged to create larger, more powerful units to represent the interests of the membership. Merging small local unions into larger statewide locals provides the benefits of more efficient methods available for the administration of the union business, increased coordination of collective bargaining and better representation of the union out in the field.

**T**HE UNION WILL BE CENTRALIZING the dues-collection process, providing greater presence of business agents in the field, streamlining employee benefits, and coordinating collective bargaining, all with the promise of better serving BAC members and their families.

If you have any questions regarding the Union, your benefits, work rules or any other aspects of belonging to Local #1, please feel free to contact either Jim Lundquist or Mike Cook at the Union office. Both Jim and Mike serve as trustees to a number of the fringe benefit funds, are active with contract negotiations and are knowledgeable regarding the business affairs of the Union. All members of the Union staff are dedicated to serving the membership, and hope to be of service to you and your family. Again, on behalf of us all, welcome to our family.

## *New chapters formed*

The merger of 10 local unions into Local #1 Minnesota has created the need to start new chapters or sub-local's of Local #1 Minnesota. Three new chapters have been created, with each chapter to have a chapter chairman, a recording secretary and a sergeant-at-arms. The officers are appointed by the International Union and serve at the pleasure of the President until the next election, which will be conducted by mail ballot in November 2002.

Each chapter will have monthly informational meetings that will be held at alternating locations. All monthly chapter meetings are listed on the Calendar of Events 2001, located on the last page of this newsletter. Please note that there are no chapter meetings in April, July or October.

Former Locals 3 and 16 will make up the Northeast chapter of Local #1 Minnesota and will be referred to as Chapter #3. Meeting locations will alternate between the Electricians Hall in Hibbing and the

Labor Center in Duluth. The meetings will be held the second Wednesday of each month at 7 p.m. The Chapter #3 chairman will be Dave Grandaw, the recording secretary will be Stanley Paczynski and the sergeant-at-arms will be James Stebe. Dave Grandaw will serve as the field representative for this area.

**F**ORMER LOCALS #7, #8, #10, #17 and #21 will make up the Southeast chapter of Local #1 Minnesota and will be referred to as Chapter #8. Meeting locations will alternate between the VFW Club in Faribault and the Labor Hall in Rochester. The meetings will be held the first Monday of each month at 7 p.m. The Chapter #8 chairman will be Mark Caron, the recording secretary will be Robert Gustafson and the sergeant-at-arms will be Gary Zick. Mark Caron will serve as the field representative for this area.

Former Locals #12, #13 and #15 will make up the Northwest chapter of Local #1 Minnesota and will be referred to as Chapter #15. Meeting locations will alternate between the Eagles Club in Brainerd, the American Legion in Bemidji and the Eagles Club in Thief River Falls. The meetings will be held the second Thursday of each month at 7 p.m. The Chapter #15 chairman will be Rodney Sletten, the recording secretary will be Daniel Nauer and the sergeant-at-arms will be Jay Carroll. Rodney Sletten will serve as the field representative for this area.

## *Funds merger will benefit members*

The Twin City Bricklayers Health and Welfare Fund and the Minnesota Ceramic Tile and Allied Trades Welfare Fund have merged. This merger will be of benefit to the memberships of both funds. Ceramic Trades participants will have the same eligibility and benefits as the Bricklayers.



The Trustees of both health plans reviewed a side-by-side benefit comparison of the features of each fund. While there is give and take, overall the benefits are approximately the same from an actuarial value point of view, according to a study performed by The Segal Company. There are several differences in Ceramic Tile Participant coverage, with which these members will want to be sure to become familiar.

The two biggest changes are 1) freedom of choice, and 2) outstanding retirement health coverage. Freedom of choice means that these members, like all Bricklayer families, will be able to choose their

*Please turn to next page*



COMMENTARY

# ...in the statewide merger of locals

*Continued from previous page*

health care providers without needing to limit their choice to a certain network of providers. While the funds do have an arrangement for discounts on medical services that have been provided to Bricklayer families, no health care providers are excluded based on their network affiliation.

Zenith Administrators is now performing the administrative work of merging these funds. Ceramic Tile participants will remain under their group Medical plan through June 30, 2001.

**A**S FOR HEALTH CARE in retirement, the Ceramic Tile participants are slated to participate in the Bricklayers retiree health care plan. This plan provides a prefunded health benefit designed to cover substantial medical premiums in your retirement. Currently, the Bricklayer retirees receive a credit of \$12.50 per year of service, to a maximum of 30 years (\$12.50 x 30 yrs.=\$375 per month, or \$1125 per quarter) as a set off of medical premiums before Medicare eligibility, and one-half that amount after Medicare eligibility.

Some years ago, the Bricklayer Health and Welfare Trustees saw that health care in retirement was a

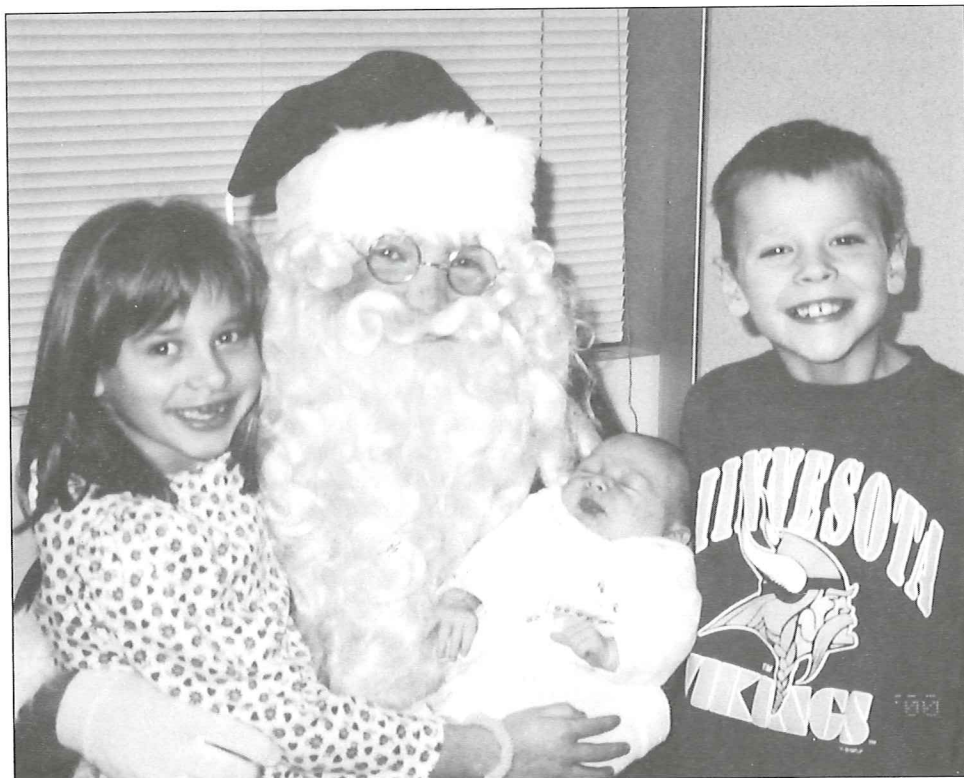
major issue facing retiring members. The trustees designed and implemented an "in house" Medicare supplement plan, and coupled that with a prefunded benefit design to create unprecedented retirement health care security for the members of Local 1. The trustees kept the program "in house" so that retirees would not be subject to the whims of large network providers who go in and out of various programs, forcing members to seek out different forms of health coverage in their retirement years. This Medicare supplement plan was coupled with the prefunded design to ensure that all Bricklayers and their spouses would enjoy a dignified and secure retirement.

**M**IKE HAWTHORNE will be taking a place as an alternate trustee on the Board of Trustees of the Bricklayer Health and Welfare plan, replacing Dick Kentzelman on the Board. Mike has served as a trustee for many years on the Ceramic Tile Health and Welfare Fund and will be a valuable aid to the board in understanding transition issues presented with the merger of the funds.

Questions regarding these programs can be addressed to either Jim Lundquist or Mike Cook at the BAC Local #1 office; either would be happy to provide further information regarding the merger, benefit coverage or retirement plan qualification. ■

## SANTA AND FRIENDS

Magician David Piccirillo, along with Santa Claus and his elves, helped make this year's Children's Christmas party a success. Magic, face-painting elves, bags of candy and Santa Claus put many smiles on the faces of the children and grandchildren of BAC members. Pictured are the children of Mike and Sandy Bradley: daughter Merissa, one-month-old son Prestin and son Branden.





**B E N E F I T S & H E A L T H**



**Jim Lundquist**  
Executive Vice  
President

# The BAC retiree picture...

**T**HE TRUSTEES of the benefit funds that serve the trowel trades in Minnesota have always been concerned with the quality of life of members and their families. The benefit funds have served as a cornerstone of the protection of BAC families for many years, and their importance and impact continue to grow. An example of this is the prefunded health coverage program of the Twin City Bricklayers Health and Welfare Fund.

The Twin City Bricklayers Health and Welfare Fund is a leader in the area of retiree coverage. Plan participants are currently contributing to a prefunded health and welfare benefit that will help insure lifetime excellence in health care coverage for members and their spouses.

**S**OME YEARS AGO, it was apparent that something needed to be done regarding the escalating cost of health insurance. As new technology, new medicines and better access to health care providers increased the demands on health funds, cost rose dramatically. In addition, the ratio of retirees to active workers has shifted, bringing increased pressure on subsidies provided to retirees through active worker contributions. As a consequence, the trustees decided to undertake a bold step to insure retirement security for BAC members by initiating a prefunded health program.

The prefunding program provides the money to ensure that plan participants have affordable health care. The trustees have combined this program with an "in house" Medicare supplement insurance policy. This "in house" program ends the risk of retirees being bounced from one insurance provider to another, in their retirement years, as the volatile health insurance market responds to this increasingly chaot-

ic environment.

The Twin City Bricklayers Pension Fund has also worked aggressively to increase retirement income for BAC members. This "defined benefit" plan brings participants the best of retirement security. The design chosen by the trustees combines lifetime income security, strong disability protection, retirement date choice and professional money management into a package that provides real retirement security and dignity for participants.

The Union is deeply committed to providing the best in employee benefits to the membership. Your

trustees continue to work hard to address the challenges of the future, and hope that your continued support for excellence in employee benefits will provide all plan participants with the quality of life that they so richly deserve. ■

## **Ceramic Tile Vacation and Holiday Fund merges with Bricklayer Vacation Fund**

**T**HE MINNESOTA Ceramic Tile Vacation and Holiday Fund has merged with the Twin City Bricklayer Vacation Fund. Effective with hours worked in January 2001, contributions for tile members will be deposited in the Bricklayer Fund. The Bricklayers pay their vacation benefit much the way that the tile setters have in the past.

There are some differences, which the tile members will want to understand. The Bricklayers Vacation Fund pays a benefit in May (70%) and December (30%). Members need to apply for the benefit payable in May; the December benefit is automatically sent to the last address of record filed by the member with the fringe benefit office.

In addition, because the Bricklayer Fund is much larger than the Tile Fund, the fund is able to accumulate earnings in excess of the expenses for the fund. These excess monies are paid as interest to the membership. The trustees evaluate the earnings and

---

*The Twin City Bricklayers Health and Welfare Fund is a leader in the area of retiree coverage.*

---

*Please turn to next page*



**BENEFITS & HEALTH**

# ...gets better and better



**Mike Cook**  
Vice President

*Continued from adjacent page*

expenses of the fund on an annual basis and declare interest payouts on behalf of the membership when sufficient interest has accumulated.

Mike Hawthorne, business agent for the Union who works with the Ceramic Tile members, is joining the Board of Trustees of the Bricklayers Vacation Fund. If you have any questions about your benefits, feel free to contact either Mike Hawthorne or Mike Cook at the Union office. Both these business agents are familiar with the affairs of the fund, and can help get you any information needed to understand your benefits. ■

### Summary of material modification

In December 2000, Trustees of the Twin City Bricklayers Health and Welfare Fund announced to all Plan participants significant benefit improvements that took effect Jan. 1.

### For active employees and retirees who retired on or after Jan. 1, 1998:

For a retiree on Medicare with a spouse covered under the Twin City Bricklayers Health and Welfare Fund, who is not yet eligible for Medicare, there is a new contribution offset amount of \$9.50 per Service Credit. This amount will be credited towards the cost of your coverage until your spouse becomes eligible for Medicare, at which time the contribution offset amount will reduce to the Medicare Eligible amount (currently \$6.25 per Service Credit).

**For active employees:** Any hours worked in excess of 375 per quarter will be credited to your hour bank. Currently, only hours in excess of 400 per quarter are credited. The maximum number of hours allowed in your reserve bank will remain at 1,600.

If you have any questions about this benefit, contact the Fund Office at 952-832-7035. ■



**First-year Bricklayer** apprentices were sworn in at the Nov. 9, 2000, chapter meeting in St. Paul. Front Row Seated, left to right: Luke Otterness, Jordana Stiffarm, Jeremy Schweiger, John Muskat, Ronald VonSprecken, Loren Capeti, and Richard Wolff. Back Row standing, left to right: Craigen Harris, Michael Apple, Eric Engesether, Roger "Kim" Noren, Thomas Welle, Michael Learmont, Ruth Gyorgak, Todd Paske, Steve Schafer, Elmer Dahl, Jane Waller, Chad Jungwirth, Anthony Stomberg, Chad Caza, Guy Rogers, Robert Lux, Brian Mikyla, and Apprenticeship Coordinator Mark Wickstrom. Not pictured was instructor Dan Quinlan.

**BRIEFLY**

# A bit of this and that...

## Vacation plan interest payments total \$250,000

Trustees of the Twin City Bricklayers vacation Plan are pleased to announce a \$250,000 interest payment to the membership.

All members who meet the minimum participation standards of the plan are to receive an interest payment, with checks to be mailed about March 15.

The vacation fund is paid in two installments each year, in addition to any declared interest payment.

Seventy percent is paid in May of each year, representing a vacation benefit, and the remaining 30 percent is paid in November as a holiday benefit.

Interest payments are declared in January of each year and are paid in March, when earnings have been sufficient.

Participants who do not receive their checks by April 1 should call Lisa Adolphson at Zenith Administrators, 952-832-4089.

Vacation fund earnings pay first for administration, with the balance going as an interest dividend to the membership.

Trustees strive to keep administrative costs low, so as to maximize the interest payments. ■



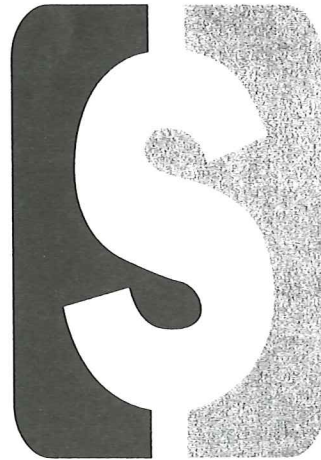
## CONTACT US BEFORE YOU RETIRE

If you are considering retiring, please contact the Union office three months in advance to fill out the necessary papers. At that time we can reduce your union dues.

...

### Send card with dues

We are receiving a lot of union dues in the mail without the Union dues card. It is important for you to send in your plastic Union dues card with each payment to get proper credit. The following over-the-counter monthly dues structure will be followed for the entire State of Minnesota:



- Journeyman – \$27.00
  - Apprentice and Unrelated – \$17.00
  - Shop – \$20.00
  - Retired and Disabled – \$12.00
  - Disabled – International, \$6.00
  - Brick Contractor – \$55.00
  - Tile Contractor – \$50.00
  - Retired 40-Year Member – Free
- All dues for the entire State of Minnesota should be sent to:
- Bricklayer and Allied Craftworkers  
Local Union #1 of Minnesota  
312 Central Avenue, Suite 328  
Minneapolis, MN 55414**

## NEGOTIATIONS



No dates have been set for negotiations.

We will keep you updated at the monthly union meetings on the progress of negotiations after we meet with the contractors. ■



FROM THE FRONT PAGE

*...but rose to top in unions, government*

*Continued from previous page*

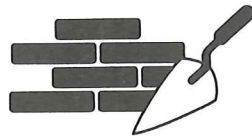
learned that the hardworking position was an ideal spot to learn about the organization. In 1960 he became a part-time business manager, and for six years he worked two jobs, his own construction work plus handling negotiations and members' problems. By 1966, he had succeeded in persuading the International to provide more support, and he became a full-time business agent.

Two years later, in 1968, Samuelson ran for public office as a DFL member. He didn't work his way up through a succession of local offices; he vaulted directly to the top, as a member of the Minnesota House of Representatives. Re-elected every two years, except for one lost election in 1978, Samuelson served in the House until 1982, when he won a seat in the Minnesota Senate. He has been elected every four years since.

**R**UNNING A DOUBLE CAREER as business agent and state legislator worked well until the last few years, Samuelson said. "The Legislature is in session during the winter, and most of our work was in spring, summer and fall. So for a long, long time, it worked out just fine. But as the economy got better, jobs got more plentiful. For the past five or six years, we've had virtually year-round work." It worried him, he said, because he began to get the feeling he wasn't giving his union job the attention it needed.

Last November, Samuelson went through his tightest race since the 1978 loss. Republican national candidates swept his district, and he didn't know until 5 a.m. the next day that he'd been returned to office. He slept for a few hours, then got up and started making

calls. "I was talking to some of my colleagues here at the Capitol, and saying 'I believe I'm going to be a candidate for president of the Senate, and I'd appreciate your help.' He found he had more support than he'd expected, and when the Legislature convened in January, he was quickly elected to the top post.



*"...as a little kid in grade school, I was determined that I was going to be a bricklayer."* – Samuelson

The election coincided with the Bricklayers' statewide merger. Samuelson decided it was time to retire as business agent for Brainerd. Now, he said, someone else "will go out there and do the job that was meant to be done, as a full-time officer."

**S**AMUELSON, now 68, will be working more than full-time throughout the legislative session. As chair of the Senate's property tax budget

division, he'll be dealing with the governor's proposal to redesign the property tax system. He also will introduce a wage package for health care workers, providing a six percent increase for each of the next two years. And he will reintroduce a Patient's Bill of Rights which cleared the Senate last year but was stalled in the Minnesota House.

In his own home community, Samuelson said, he wants to invite his union buddies to help him form a Bricklayers retiree club.

Being elected President of the Minnesota Senate, Samuelson said, was "quite overwhelming." "I only went to high school, and certainly my father and grandfather never went any farther than that. To sort of work your way up is kind of neat, and to actually become President of the Senate is a tremendous honor." ■

**As chair of the Senate's property tax division, Samuelson will be dealing with Gov. Ventura's plan to redesign the property tax system.**



**M I L E S T O N E S**

**Tile Layers  
receive awards**

Mike Hawthorne (left), Business Representative for Local #1, presented Gold cards for 50 years of membership in the International Union to Gordy Johnson (2nd from left) and Milton Reline (3rd from left). Robert Qualley (right) received a pin for 40 years in the International Union. The awards were given at the Chapter meeting on Dec. 12, 2000.



AFDAHL, THOMAS  
ALBRECHT, MARK  
APPLE, MICHAEL  
BALLANTYNE, STEVEN  
BEAULIEU, CAMERON  
BECK, ALAN  
BERQUAL, BRENT  
BJORDAHL, TROY  
BRATKOV, VITALI  
BROWN, MAC  
BUCKO, AARON  
CARTER, REGINALD  
CAZA, CHAD  
COATES, MICHAEL  
COWDIN, BRENT  
CROUSE, RONALD  
CURTIS, PRESTON  
DAHL, ELMER  
DAVIS, GLENN  
DIBBLEE, GENE  
DOCKHAM, THERESA  
DUBOVOY, YEVGENIY  
DYSTON, STEVEN  
FERREYRA, JAVIER  
FOLEY, NICHOLAS  
FORE, ROBERT  
GOFF, ANTHONY  
GREENER, RONALD  
GUNDERSON, JEFFREY  
GUSTAFSON, TIMOTHY  
GYORGAK, RUTH  
HAMILTON, DOUGLAS  
HARRINGTON, TODD  
HARRIS, CRAIGEN  
HOECK, ALAN  
JACOBS, JEFF  
JENSEN, ERIK

**NEW MEMBERS**

*We welcome these new members...*

JOHNSON, BRENT  
JOHNSON, DAVID A  
JOHNSON, ROBERT T.  
JOYNER, RYAN  
JUNGWIRTH, CHAD  
KAISER, CRAIG  
KIRSCHBAUM, PAUL  
KLANDE, RODNEY  
KREKELBERG, DANIEL  
KUJATH, MARK  
KUNZE, THOMAS  
LARSON, STEVEN  
LOIDOLT, JOSHUA  
LORD, DAVID  
LUCKETT, TONY  
LUX, ROBERT  
MARTAGON, CHRIS  
MAU, NEIL  
MAURER, DAVID  
MCALESTER, NOLDAN

MENSUR, BIKIC  
MEYER, WILLIAM  
MORALES, JOSE  
MORENO, APOLINARES  
MORENO, ROBERTO  
NOORDHOEK, DUANE  
O'CONNOR, PATRICK  
OSER, LADD  
OTTERNESS, LUKE  
PEARSON, RYAN  
PITTMAN, ELIZABETH  
POITRA, ROBERT  
RANDAZZO, CHRISTOPHER  
REFIK, SIJARIC  
REICH, JR. , ROBERT  
RISTAU, JASON  
SAATHOFF, RYAN  
SCHWEIGER, JEREMY  
SEPPANEN, JASON  
SPOTTS, DONOVAN  
STIFFARM, JORDANA  
SUMSTAD, SCOTT  
SUSAK, RENATO  
THOLE, BRIAN  
THOMPSON, RENEE  
TRKULJA, GORDON  
USZENSKI, PAUL  
VLADYKA, NIKOLAY  
VONSPREECKEN, RONALD  
VOSS, TIMOTHY  
WELDON, BENJAMIN  
WELDON, DAN  
WHITE, MICHAEL  
WOLFRAM, PAUL  
ZANMILLER, STEVEN  
ZASPEL, DANIEL  
ZIMMERMANN, JULIUS

**DECEASED MEMBERS**

*We are sorry to report these deaths:*

| <b>NAME</b>       | <b>CHAPTER</b> |
|-------------------|----------------|
| GERALD CLARK      | #1             |
| OTIS ELLIOT       | #18            |
| MICHAEL GASLIN    | #18            |
| RUDOLF KLATTE     | #2             |
| KENNETH PASCHKE   | #2             |
| CLAIR PFLUGER     | #17            |
| RUSSEL THARALDSON | #15            |
| LESTER TRETTER    | #1             |
| HERBERT VIK       | #8             |