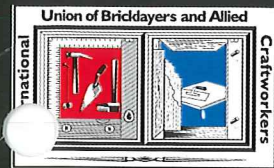


# QUARTERLY UPDATE



DECEMBER 2009  
VOLUME 17, NUMBER 4

Bricklayers • Stone Masons • Tile Layers • Marble Masons • Terrazzo • Blocklayers • Finishers • Shopmen  
Cement Masons • Pointers - Cleaners - Caulkers • Concrete Products Specialists

## INSIDE THIS ISSUE

**HEALTH NEWS:**  
UPDATES/3

**SCHOLARSHIPS:** /5

**PEOPLE:**  
AWARDS/6-7

**SPECIAL CALL WAGE**  
ALLOCATIONS/8

**EVENTS:**  
CALENDAR/10-11

**GOVERNMENT:**  
Health Insurance  
Reform/12

## Workers' Memorial Garden Pays Tribute to MN Laborers

By Patricia Johnson



*President of Kraus Anderson, Bruce Engelsma; State Senator from District 59, Lawrence Pogemiller; Retired State Building Trades President Dick Anfang; President of Minnesota AFL-CIO, Shar Knutson; Morgan Fleming; Minnesota State Representative from District 46A, Michael Nelson; business manager of the Minneapolis Building Trades, Michael Hawthorne; Gean Garbarini; and President of the Minnesota State Building Trades and St. Paul Building Trades Secretary-Treasurer, Harry Melander.*

**O**n October 5, 2009, ground breaking ceremonies took place for Minnesota's Workers' Memorial Garden. The garden style memorial is being built on the south side of the Capital grounds.

And unlike other memorials surrounding it – those in remembrance of WWII, Korean and Vietnam war veterans - this will be the first of its kind; dedicated to all Minnesotans who have lost their lives while laboring through physical and economic hardships to build the great state of Minnesota. In spite of the state's relatively short history, many lives have been claimed in tragic events: 18 lives were lost in the flour mill fire of 1878 and 41 miners were killed during the cave-in and flooding of the underground Millford Iron Range in 1924. Still others may recall the 29 crew members who perished aboard the Edmund Fitzgerald during a fierce Lake Superior storm in 1975. And in more recent history, the lives that were lost during the 35W bridge collapse.

*Continued on Page 9*

## From the President

By Jim Lundquist

### Representation Cards

In the next few weeks all active working members should be receiving an Authorization for Representation Card in the mail with a return envelope. These representation cards are an important part of your union membership. We are required by the Department of Labor (DOL) to update these cards from time to time. With negotiations approaching, we would appreciate the cards returned to us as soon as possible.

We know that there are many members that don't come to the meetings but would still like a voice regarding their wages, benefits and work rules. We are asking all members to send their comments on a separate sheet of paper in the envelope with the Representation Card. This is your opportunity to be heard.

### Negotiations

Many of the BAC Local 1 MN/ND contracts will be expiring on April 30, 2010. Included in the expiring contracts are: **Bricklayers and PCC's** – Metro, St. Cloud, Rochester, Faribault, Red Wing,

*Continued on Page 2*

## Please Join Us

Join us for our annual meeting at the Prom Center on Dec. 14. **RSVP by Dec. 4.** Give us a call at 612-379-2966 or respond at our Web site BAC1MN-ND.org



### LOCAL TELEPHONE

612-379-2966

### OUTSTATE AND ND

1-800-257-8636

### BAC INTERNATIONAL UNION

1-888-880-8222

### FAX

612-379-8754

### INTERNET RESOURCES

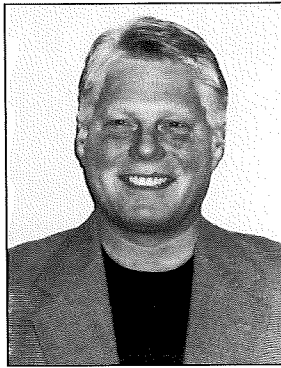
General Information:  
BAC1MN-ND.org

Apprenticeship and Training:

BACtraining.org  
or phone  
651-487-5500

### BENEFITS

Check the Zenith Administrators Web site, [www.zenithadmin.com](http://www.zenithadmin.com) or phone either 651-256-1801 or 1-800-879-4412



Jim Lundquist  
President/  
Secretary-Treasurer

## Health Fund Offers a New Supplemental Alternative Choice

The Bricklayer and Allied Craftworkers Local Union 1 Minnesota/North Dakota Health Fund "Current Plan" will now be offering an additional Medicare Supplement to all BAC retirees and spouses. Enrollment has already begun for members that choose to join the Medica Prime Solutions Plan "Medica Plan". This new Plan offers all BAC Retirees a choice between the current plan and the new Medica plan. All future Medicare eligible members will be given a choice between the two plans or as they approach Medicare eligibility.

The new Medicare Supplement plan offers some great new benefits:

- ▶ Our current plan has a lifetime maximum benefit of \$125,000.
- ▶ The Medica plan has no lifetime maximum.
- ▶ Our current plan has a \$4,000 annual prescription drug benefit.
- ▶ The Medica plan has no limits for annual drug coverage. There are special co-pays for generic, preferred brand and specialty drugs.
- ▶ Our current plan has a yearly out-of-pocket maximum of \$3,000.
- ▶ The Medica plan has a maximum out-of-pocket of \$1,000.

*The Medica plan does not have a vision benefit, hearing aid benefit or dental benefit. The current plan has limited benefits for those services.*

These and other items should be considered before making an election. The plan design currently allows for an election to join the Medica plan (or switch back to the current plan) during an annual open enrollment period at the end of each year. If both the husband and wife are Medicare eligible, you must both make the same plan election.

Please join us at the retirees' meetings or general membership meetings to get more details. Or you can stop by the member health fair on April 10th. You may also call Zenith Administrators Customer Service line at 651-256-1801.

## Negotiations

*Continued from Page 1*

Albert Lea, Mankato, New Ulm, Duluth and the Iron Range. **Cement Masons** – Albert Lea, Austin, Red Wing, St. Cloud and New Ulm. **Tile Layers and Finishers** – Metro, Rochester, Duluth and Western Minnesota and North Dakota. **Precast** – MN & ND. **CMU Insulators** – MN & ND. **Terrazzo Workers** – MN & ND. **Twin City Marble Shop.**

With negotiations approaching, Mike and I have already met with a group of contractors and the Associated General Contractors (AGC) along with several other trades. This meeting was not to negotiate but to discuss the Management and Union Labor partnership going into the future. With many of our brothers and sisters out of work, some for more than a year, we need to approach negotiations different than we have in the past. This is not business as usual. The past practice attitude in negotiations will have to change this time around. The Local will be asked to do our share in order to stimulate the economy. Whatever we do in this year's negotiations, we will be doing it with the welfare of our members in mind and getting everyone back to work.

### Attention members approaching or already qualified for Medicare

If you are receiving direct marketing materials from Medicare Part C programs such as Humana or Ucare, please be aware that *only the Medicare Part C Supplement program **offered by Medica*** is endorsed by the Minnesota and North Dakota Bricklayers and Allied Craftworkers Local 1.

# HRA Debit Cards

The BAC Local 1 Minnesota / North Dakota HRA Debit cards were mailed in early October. We experienced some difficulty with the use of the card in the first few days after they were issued. We apologize for any inconvenience that this may have caused and we are happy to report that most members are now using the card with no trouble. Not all providers are currently able to use the debit card technology. Our fund professionals are working diligently to expand the HRA network to provide a better benefit to all participants.

Remember that the debit card is ONLY for qualified medical expenses (see below and BAC Website for examples). We have had several instances where the card was attempted to be used either at a non-medical facility (or pharmacy), or for non-medical purchases. This card is not a cash card.

## Examples of Qualifying Health Care Expenses

Some examples of health care expenses that are eligible for HRA reimbursement:

- ▶ Medicine, drugs, birth control pills, and vaccines that your doctor prescribes and that are FDA approved
- ▶ Non-prescription medications

- ▶ Medical doctors, dentists, eye doctors, chiropractors, osteopaths, podiatrists, psychiatrists, psychologists, physical therapists, acupuncturists and psychoanalysis (medical care only)
- ▶ Medical exams, x-ray and laboratory services, insulin treatment and whirlpool baths the doctor prescribed
- ▶ Nursing help. If you pay someone to do both nursing and housework, you can be reimbursed only for the cost of the nursing help
- ▶ Hospital care (including meals and lodging), clinic costs and lab fees
- ▶ Medical treatment at a center for substance abuse
- ▶ Medical aids such as hearing aids (and batteries), false teeth, eyeglasses, contact lenses, braces, orthopedic shoes, crutches, wheelchairs, guide dogs and the cost of maintaining them
- ▶ Ambulance service and other travel costs to get medical care
- ▶ Health insurance self pays or COBRA payments

## Expenses That Don't Qualify

The following are NOT qualified expenses under your HRA card:

- ▶ Life insurance or income protective policies
- ▶ The hospital insurance benefits tax, withheld from you pay as part of the Social Security tax or paid as part of Social Security self-employment tax
- ▶ Nursing care for a healthy baby
- ▶ Illegal operations or drugs
- ▶ Travel your doctor told you to take for rest or change
- ▶ Cosmetic surgery
- ▶ Teeth bleaching

Please log in (through Zenith Web site) to the UHS Lumina page and complete the Health Risk Assessment! Follow the easy instructions to complete your medical info file.

## Running Out of Health Benefits?

COBRA is available to members when they run short of qualifying hours to be eligible under our health fund. COBRA coverage must be selected when you are offered your first self pay for continuing health benefits.

Another alternative to COBRA or when COBRA runs out is purchasing individual health insurance. Char Pendergrass at Anderson Agency can help you get set up with individual health options. Contact Char directly at 612-236-1770, 312 Central Ave. SE, Suite 392, Minneapolis, MN, or email at [cpendergrass@andersonagencyins.com](mailto:cpendergrass@andersonagencyins.com).

mchamn.com, was established in 1976 by the Minnesota Legislature to offer policies of individual health insurance to Minnesota residents who have been turned down for health insurance by the private market, due to pre-existing health conditions and individuals who have exceeded lifetime maximum limits.

If you find yourself in one of these situations and would like assistance with completing the necessary paperwork, contact Char.

Minnesota Comprehensive Health Association (MCHA), [www.mchamn.com](http://www.mchamn.com)

# 2010 Journeyman Upgrade Schedules

## **Tile Classes**

<b>Date</b>	<b>Topic</b>
1/6/10	C-Cure
1/20/10	Schluter Systems
2/3/10	Mapei
3/10/10	TEC
4/7/10	Custom Products

All classes are held at the Apprenticeship Training Center in the metro area. Training runs from 4 - 8 p.m.

## **Masonry Classes**

<b>Date</b>	<b>Topic</b>
3/5/10	Marble & Granite
3/26/10	Ashlar Stone

All classes are held at the Apprenticeship Training Center in the metro area. Training runs from 7 - 3:30 p.m.

**NOTE:** General policy for Journeymen Upgrade classes

Stipend                      8 hour: \$100      4 hour: \$50

**NOTE:** BAC members may attend any training made available, but stipend reimbursement will apply only to participants actively registered to perform work in a specific trade area. For example: A tilelayer will not be reimbursed for taking a Flashing Upgrade course. And likewise, a bricklayer would not be reimbursed for taking a Shower Pan Installation Upgrade course.

**Course Description:** Federal Mediation and Conciliation service is an independent agency of the Federal Government established in 1947 by the Taft-Hartley Amendments to the Labor-Management Relations Act. The mission of the agency is to promote sound and stable labor-management relations, prevent or minimize work stoppages, advocate collective bargaining and foster constructive joint relationships of labor and management leaders. The information presented during this course will include: Collective Bargaining, Relationship Development Training, Grievance Mediation, and Alternative Dispute Resolution.

**NOTE:** Completion of Course I and II is not required to enroll in the Federal Mediation course, but is recommended.

Part 1                              3/1 & 3/2                      4-8 p.m.

**All Red Cross courses** require a minimum class enrollment of eight participants. If the minimum enrollment is not met, training will be cancelled and participants will be notified by phone no later than three days before the scheduled date.

First Aid	3 year certification
CPR	1 year certification
AED	1 year certification

If an individual is certified in First Aid/CPR in 2008-09 they would only need to take CPR/AED training this training year.

**CPR/First Aid/AED training** will be held at the Apprenticeship Training Center in the metro area.

AED/CPR	1/7/10	4-8 p.m.
CPR/First Aid/AED	2/6/10	7 a.m.-4 p.m.

## **Foreman Training**

### **Course 1: Intro to Supervisory Management for Journeymen**

This course is designed to educate Journeymen in:

- **Supervisory management roles and challenges**
  - Helping job-site leaders develop a management philosophy
- **Essentials of leading**
  - Communication                      – Motivation
  - Leadership                              – Team building

Dates:                              1/4 & 1/5/10                      4-8 p.m.

*Note: This class is a prerequisite to course 2.*

### **Course 2: Intro to Problem Solving and Decision Making for Journeymen** – This course is designed to educate journeymen in:

- The fundamentals of planning as a way to reduce potential problems
- The fundamentals of organizing to reduce potential problems
- Decision making, problem solving and ethics
- Management conflict, stress, and time

Dates:                              2/1 & 2/2/10                      4-8 p.m.

## **New Journeyman Upgrade Sign Up Policy**

Due to large numbers of no shows for previous Journeyman upgrades, starting September 1, 2009, all journeyman upgrade classes will require a \$50 deposit at the time of registration, by personal check, to hold your spot in the class. Your check will be returned to you at the time of the class. Checks will be deposited if you do not cancel 10 business days before the class is scheduled to be held.

# Scholarships Available for Union Families

*Application Deadline for Earliest – Jan. 30, 2010*

Many good scholarship opportunities are available for union family members. And the scholarship season begins soon with one award having a January deadline.

For information on student scholarships available at the national AFL-CIO level log on to [www.unionplus.org](http://www.unionplus.org). Under “Legal & Education” click on “Scholarships”. Here you will find the Union Plus scholarship. Its application deadline is Jan. 30, 2010. Further information is also available on the Union Plus National Labor College Scholarship, the Union Leaders of the Future Scholarship, the Union Plus “Green” Scholarship and a college savings grant.

The Minnesota AFL-CIO also offers scholarships. For more information log on to [www.mnafcio.org](http://www.mnafcio.org), and follow the link marked “Scholarships.”

The North Dakota AFL-CIO offers a scholarship. Log on to [www.ndafcio.org](http://www.ndafcio.org) and click the link “Scholarship Information.”

For information on student scholarships available at the national BAC level log on to [www.bacweb.org](http://www.bacweb.org). On the link to the left, click on Member Benefits > Education > Scholarships. The online application deadline is February 28, 2010. Three students, whose parents or stepparents are U.S. BAC members, are selected annually to receive a stipend of \$2,500 per year for up to four years. The program is open to sons and daughters of U.S. members who are now in their junior year of high school, and who plan to take or have taken the standardized “PSAT” exam. Email your questions or comments to [askbac@bacweb.org](mailto:askbac@bacweb.org) or call 1-888-880-8BAC (8222).

The Building Trades Credit Union also offers a scholarship. Log on to [www.buildingtradesCU.com](http://www.buildingtradesCU.com), and click on Forms & Information > Forms > 2010 Scholarships. Each June, 10 applicants are randomly drawn to each receive a \$1,000 scholarship.

**Save  
the Date**



**April 10, 2010**

**Labor Care  
Health+Benefits Fair  
Minneapolis Convention Center**

The Mission of the Labor Care Health and Benefits Fair is to motivate participants to learn about and embrace lifestyle choices that will help them live healthier and more satisfying lives. And next year's event will provide even more tools for all to achieve this goal.

We anticipate hosting more than 4,500 participants. Almost 100,000 sq. ft. of space filled with family-focused, healthy lifestyle ideas, options, vendors and presentations. Features will include indoor and outdoor sports, women's interests, kids' activities, information on exercise and healthy eating, investment planning, celebrities, shows and entertainment, prize drawings, and more!

Mark it on your calendar and plan on joining us!



## **Shar Knutson, President of the Minnesota AFL-CIO**

Shar Knutson was elected president of the Minnesota AFL-CIO in August 2009. Knutson, the first woman president of Minnesota's largest labor federation, took office on October 1.

She served as President of the Saint Paul Regional Labor Federation for 10 years, and previously served as the Regional Federation's political director. Before working for St. Paul area unions, Shar worked in St. Paul city government and was a policy analyst and assistant to Jim Schiebel when he was the mayor of Saint Paul. She specialized in labor, health and immigration issues.

Shar grew up in a union family and is working to make sure that good strong unions will be here when her young grandchildren are ready to enter the workforce.

She is committed to giving back to her community and serves on the board of the Community Action Partnership of Ramsey and Washington counties and the Advisory Councils of the Humphrey Institute of Public Affairs and the U of M Labor Education Service.



**Duluth, MN**

**Gold Card Party on October 9 at the Radisson in Duluth**

Left to right, front row: Steve Kuhlman (25-yr. member), Jim Stebe Business Representative, Robert Lund (completing tile apprentice) and President Jim Lundquist



**Fargo, ND: 40-Year Member**

**Gold Card Party on September 8 at the Fargo-Moorhead Labor Center**

Left to right: Larry Burnside and President Jim Lundquist



**Fargo, ND**

**Apprentice Completion on September 8 at the Fargo-Moorhead Labor Center**

Left to right: Josh Larson and President Jim Lundquist



**Iron Range, MN: 50-Year Members**

**Gold Card Party on October 10 at Valentino's Restaurant in Chisholm**

Left to right: Vice President Mike Hawthorne, Brick Apprentice John Wiita, Earl Thompson (40-yr. member), Bill Frommel (40-yr. member), Roger Kivela (25-yr. member) and Business Representative Jim Stebe



**Grand Forks, ND**

**Gold Card Party on September 9 at the Grand Forks American Legion**

Left to right: Randy Carlson, Jack Dencker receives his 50-year Gold Card, and President Jim Lundquist



**Golf Tournament  
Winners**

**Winners of the 2009 BAC Duluth Area golf tournament  
at Grandview Golf Links in Duluth**

Left to right: Jeff Ehlen and Nick Radke

# Special Call Wage Allocation Meetings

There will be a Special Call Wage Allocation for all chapters on January 9, 2010, at 10 a.m. at the United Labor Center in Minneapolis to discuss and vote on the funding of the Local Union Pension and Health Funds.


In addition, there will be Special Call Wage Allocation meetings starting in January 2010 and continuing into February and March 2010 at all Chapter meetings to discuss and vote on the following items:

1. Vote on Pension Protection Act (PPA) funding of the International Union Pension. The Local Union was informed in March 2009 about the shortfall in the funding for the IU pension and the need to increase the contribution rate to maintain the best accrual rate possible. Most chapters and trades will be asked to vote independently. Most areas currently are at a contribution rate of \$1.50 per hour. At the \$1.50 contribution rate the PPA funding rate is 15% (\$.23). The funding (if voted in) will take place on May 1, 2010.
2. Each Chapter will vote on disbursement of fringe benefits to be taken out of the wage package established for May 1, 2010, to any or all of the remaining fringe benefit funds.

Special Call meetings will be as follows for the following crafts and Chapters:

- 1. Saturday, January 9, 2010, Chapter #1**  
Minneapolis, United Labor Center
  - Bricklayers, Marble Masons and PCC's
  - Tile Layers (Metro and Western)
  - Tile Finishers (Metro and Western)
  - Marble Shopworkers
  - Terrazzo Finishers and Mechanics
  - Precast Masons
  - Material Handlers
  - CMU Insulators
- 2. Wednesday, January 13, 2010, Chapter #3**  
NE Minnesota, Duluth, Duluth Labor Temple
  - Bricklayers
  - Tile Layers
  - Tile Finishers
- 3. Thursday, January 14, 2010, Chapter #15**  
NW Minnesota, Bemidji Elks Club
  - Bricklayers
  - Cement Masons
- 4. Wednesday, February 3, 2010, Chapter #4**  
St. Cloud – Brainerd – St. Cloud Labor Home

- Bricklayers
  - Cement Masons
  - 5. Thursday, February 4, 2010, Chapter #11**  
SW Minnesota, New Ulm American Legion
    - Bricklayers
    - Cement Masons
  - 6. Wednesday, February 10, 2010, Chapter #3**  
NE Minnesota, Iron Range, Hibbing Electricians Hall
    - Bricklayers
  - 7. Tuesday, February 23, 2010, Chapter #15**  
Fargo, Moorhead VFW
    - Bricklayers
  - 8. Monday, March 1, 2010, Chapter #8**  
SE Minnesota – Rochester Labor Hall.
    - Bricklayers (Albert Lea, Winona and Rochester)
    - Cement Masons (Austin and Albert Lea)
    - Tile Layers
    - Tile Finishers
  - 9. Thursday, March 4, 2010, Chapter #11**  
SW Minnesota, Mankato Eagle's Club
    - Bricklayers
  - 10. Wednesday, Feb. 24, 2010, Chapter #15**  
Grand Forks, East Grand Forks American Legion
    - Bricklayers
    - Cement Masons
    - Plasterers
  - 11. Saturday, Mar. 27, 2010, Chapter #15**  
Western North Dakota (Bismarck & Minot), Beulah, North Dakota
    - Bricklayers
- \*\*\*Note that Faribault and Red Wing, Minnesota areas will vote with and follow the Metro area bricklayers.



**Building Trades  
Credit Union**

**Banking made simple. 4U.**

<ul style="list-style-type: none"> <li>&gt; Free Checking</li> <li>&gt; Free eStatements</li> <li>&gt; Free Visa Check &amp; Cash Card</li> <li>&gt; Free Online Banking &amp; Bill Pay</li> </ul>	<p><i>Plus Great Rates on Car Loans, Personal Loans &amp; Home Loans!</i></p>
--	---

Visit us online today at [www.buildingtradesCU.com](http://www.buildingtradesCU.com).



# Workers' Memorial Garden

*Continued from Page 1*

To reflect warmth and richness the memorial with its landscaped gardens and walkways are being made of materials indigenous to Minnesota such as granite, says its founder Dave Roe. It will also serve as a serene tribute to the workers of the masonry crafts.

## Rich History of Public Service

Although the idea was conceived about 10 years ago, the passion behind the memorial was decades in the making.

Roe quit high school to follow in his brother's footsteps by enlisting in the Navy in 1942. Four years later he was discharged from the service. "It was a big year for me, 1946 was," Roe says as he looks back. Not only did he return home, he finished high school, and married his high school sweetheart, Audrey, whom he met while playing accordion in the band the Jolly Ramblers at the age of 15. In this same year he also joined the Railway Clerks' Union and in one year's time became an apprentice.

Shortly after, Roe joined the lathers union and became the business manager of Local 190 until 1952 when he became the first elected fulltime business manager of the Minneapolis Building Trades Council. In 1957 he became the president of the State Building Trade Council which ran concurrently with his responsibilities as a business manager.

In 1966 Roe became president of the Minnesota AFL-CIO where he served for nearly 20 years until he was appointed to chair the Labor Interpretive Center by then Governor Rudy Perpich. To preserve the history of Minnesota's labor movement, Perpich wanted to renovate the then vacated science museum building into a labor history center, and Roe being a dedicated and committed labor man himself, was the ideal person to manage the project. Through hard work and determination Roe eventually lobbied for \$1.6 million, yet to great disappointment Jesse Ventura was elected governor and vetoed the appropriation.

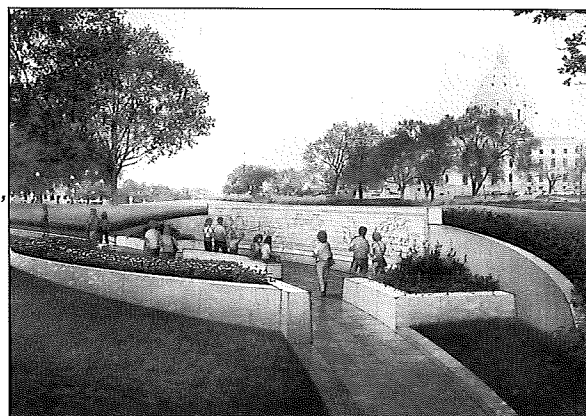
Roe wasn't deterred though.

"We can't stop here. My dream is for a workers' memorial," said Roe at the time. "We'll shift gears and work toward a memorial."

At the time Ventura's Lieutenant Governor Mae Shunck was also chair of the Capitol Area Architectural Planning Board (CAAPB) and encouraged Roe to approach the Board with his idea. His persistence to honor trades of all kind, union and nonunion, quickly rallied support from all directions.

After a year of lobbying the Board he was granted approval for the memorial during the final weeks of the Ventura administration and immediately fund raising began. Then Congressman Martin Sabel was able to secure \$150,000. The project also received a state appropriation of \$50,000. Since then contributions have been received from more than 100 unions along with many private donations

Artist's rendition of the Workers' Memorial Garden



to cover the expected cost of roughly \$400,000. This year enough funds were secured to begin the project and on October 5 Roe's vision finally became reality.

As busy as his life was, Roe also served on the Board of Regents for the University of Minnesota for approximately 12 years during this time.

Roe cites his daughter Judy Grudem for her volunteer efforts in assisting him to raise funds beginning in the Perpich years. Neither received compensation for their hard work. In return, Grudem can't express enough her father's tired less efforts in never giving up. "He wasn't going to see the project die," says Grudem.

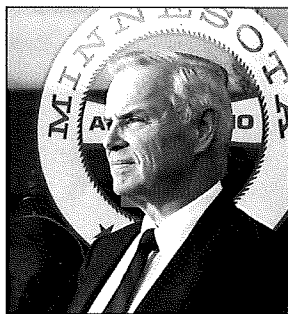
It's anticipated that construction will be completed in summer 2010 and it will be the first and only one of its kind in the United States.

This winter, Local 1 member and apprenticeship coordinator Mark Wickstrom, master stone cutter, will take the lead on carving the five stone patterns working closely with the architect Cass Gilbert. Roe also credits Jim Lundquist, Mike Cook and many other bricklayers and craftworkers for helping bring the memorial to life.

Today he continues to visit the memorial's construction site to view its progress. Roe remains hard at work raising additional funds for items such as wheelchair accessible benches. The lighting system was eliminated to meet budget, but could be added later as more funds become available.

At the age of 85, Roe says if the years are kind to him, he will assist with a memorial to Hubert H. Humphrey, whom he had met in 1946 and remained good friends until Humphrey's passing.

For those people who'd like to follow its progress, log on to Worker's Memorial Garden. If you'd like to make a donation, email Grudem at [mnwmg24@gmail.com](mailto:mnwmg24@gmail.com).



Dave Roe was president of the MN AFL-CIO from 1966-1985.



## 2009 CHECK YOUR CALENDAR FOR IMPORTANT DATES

Please clip the calendar and post it in a convenient spot so it's handy when you want to check meetings and events.

**Chapter 1-Minneapolis-St. Paul**  
Prom Center, 484 Inwood Ave.,  
Oakdale: All Metro members  
Dec. 14

**Chapter 3-Duluth-Hibbing**  
Duluth, Duluth Labor Center:  
7 p.m. Dec. 9

**Chapter 4-St. Cloud-Brainerd**  
St. Cloud Labor Home,  
1903 4th St. N.: 7 p.m. Dec. 2

**Chapter 8-Rochester-Faribault**  
Rochester, Rochester Labor Hall:

7 p.m. Dec. 7

**Chapter 11-Mankato-New Ulm**  
Mankato, Mankato Eagles Club:  
7 p.m. Dec. 3

**Chapter 15-Bemidji & ND**  
Bemidji, Elks Club: 7 p.m.  
Dec. 10

Fargo, FM Labor Temple:  
7 p.m. Dec. 8  
Grand Forks, N.D., E. Grand Forks  
American Legion, 7 p.m. Dec. 9

### OTHER EVENTS

**Retirees Club Breakfast meetings**  
Jax Cafe, Minneapolis  
9 a.m. Dec. 3

**Duluth Area Retirees meetings**  
9:30 a.m., Miller Hill Mall food court,  
Duluth, First Wed. of each month



### NEW MEMBERS

We welcome these new members...

David Anderson	Ryan Peterson
Brent Boeshans	Keith Ross III
Saah Borbor	Steven Salo
Timothy Carlson	Edward Slagel
John Cosgrove	Brian Thompson
Nicholas Fohrman	Joel Vaughan
Brian Isaacson	Durand Wimmer
George Jones	Gary Zvanovec
Justin Korbelt	
Christopher Pass	

### Real Estate, Wills, Trusts and Estate Planning/Administration

Rosene, Haugrud & Staab, Chartered  
400 Robert St. N, Suite 1800, St. Paul, MN 55101

PHONE: 651-227-6621 • FAX: 651-297-6642

EMAIL: Mail@rhschtd.com

Our law firm has been General Counsel for BAC Fringe Benefit Funds in Minnesota since 1985. We are a full service firm, dedicated to providing quality legal services. Our firm has received an A. V. rating from Martindale-Hubbell (highest possible rating on legal ability and ethical standards.) Our practice area includes Real Estate, Wills, Trusts, and Estate Planning/Administration. For additional information or an appointment, please contact us.



### DECEASED MEMBERS

We are sorry to report the deaths of these members who are listed under their pre-merger locals.

<b>#2 MN—Minneapolis</b>	<b>#3 MN—Duluth/Hibbing</b>
Harlow Fryxell	Robert Gersetich
Douglas Johnson	
Karl Kilander	<b>#6 MN—New Ulm-</b>
Charles Kraft	<b>Springfield</b>
Reuben Weise	Roman Johnson

### SIEBEN, GROSE, VON HOLTUM & CAREY, LTD "KNOW YOUR RIGHTS"

• Car, Truck & Motorcycle Accidents • Medical Mistakes  
Workers' Compensation • All Personal Injuries

800 Marquette Ave., Suite 900  
Minneapolis, Minnesota 55402

(612) 333-4500 • 1-800 4-RIGHTS

www.knowyourrights.com



# 2010 CHECK YOUR CALENDAR FOR IMPORTANT DATES

Please clip the calendar and post it in a convenient spot so it's handy when you want to check meetings and events.

### Chapter 1-Minneapolis-St. Paul

312 Central Ave., Minneapolis:  
10:00 a.m. Jan. 9 (Wage Allocation meeting)  
4:30 p.m. Jan. 11, Feb. 8, Mar. 8, May 10, June 7, Aug. 9, Sept. 13, Nov. 8  
Prom Center, 484 Inwood Ave., Oakdale: All Metro members  
Dec. 13

### Chapter 3-Duluth-Hibbing

Duluth, Duluth Labor Center:  
7 p.m. Jan. 13, Mar. 10, June 9, Sept. 8, Dec. 8  
Hibbing, Electricians Hall:  
7 p.m. Feb 10, May 12, Aug. 11, Nov. 10

### Chapter 4-St. Cloud-Brainerd

St. Cloud Labor Home,  
1903 4th St. N.: 7 p.m. Jan. 6, Feb. 3, Mar. 3, May 5, June 2, Aug. 4, Sept. 2, Nov. 3, Dec. 1

### Chapter 8-Rochester-Faribault

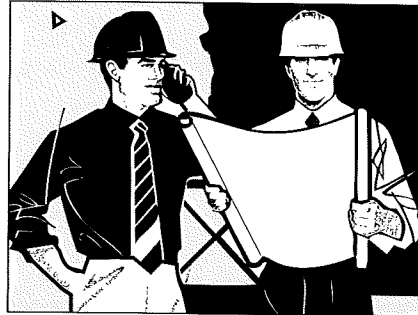
Rochester, Rochester Labor Hall:  
7 p.m. Jan. 4, Mar. 1, Sept. 13, Dec. 6  
Faribault, VFW: 7 p.m. Feb. 1, May 3, Aug. 2, Nov. 1

### Chapter 11-Mankato-New Ulm

Mankato, Mankato Eagles Club:  
7 p.m. Jan. 7, Mar. 4, June 3, Sept. 2, Dec. 2  
New Ulm, American Legion:  
7 p.m. Feb. 4, May 6, Aug. 5, Nov. 4

### Chapter 15-Bemidji & North Dakota

Bemidji, Elks Club: 7 p.m.  
Jan. 7, Mar. 4, May 1, Apr. 6, June 3, Aug. 5, Sept. 2, Nov. 4, Dec. 2  
Bismarck-Minot, AmericInn:  
Beulah, 10 a.m. Mar. 27 (Wage Allocation meeting)  
Bismarck, AmVets: Mar. 26 (meeting and Gold Card Dinner)  
Dickinson, St. Anthony Club: 8 p.m.  
Jan. 27, Dec. 17



Fargo, Moorhead VFW:  
7 p.m. Feb. 23 (Wage Allocation meeting), May 25, Nov. 16 (meeting and Gold Card Dinner)  
Fergus Falls, MN., American Legion:  
7 p.m. Feb. 4  
Grand Forks, N.D., E. Grand Forks American Legion: 7 p.m. Feb. 24 (Wage Allocation meeting), May 26, Aug. 11, Nov. 17 (meeting and Gold Card Dinner)  
Minot, VFW: 7 p.m. Jan. 28, Mar. 25 (meeting and Gold Card Dinner), June 24, Sept. 23, Dec. 16

## GOLD CARD DINNERS

Letters will be mailed.

### Metro Area Gold Card Luncheon

Prom Center, 484 Inwood Ave., Oakdale: 11 a.m. July 15

### Chapter 3-Duluth-Iron Range

Duluth area: Downtown Radisson,  
6 p.m. Oct. 8  
Iron Range: To be determined,  
6 p.m. Oct. 9

### Chapter 4-St. Cloud-Brainerd

Eagle's Club: 6 p.m. April 10

### Chapter 8-Rochester-Faribault

Rochester Eagle's Club:  
6 p.m. June 4

### Chapter 11-Mankato-New Ulm

Mankato: Mankato's Eagle's Club,  
6 p.m. April 30

### Chapter 15-Bemidji & North Dakota

Bemidji Elks Club: 7 p.m. March 12  
Dickinson St. Anthony Club: 7 p.m. Feb. 12  
Minot VFW: 7 p.m. Feb. 13  
Moorhead VFW: 7 p.m. Sept. 8  
Grand Forks Am. Legion: 7 p.m. Sept. 9

## OTHER EVENTS

### Retirees Club Breakfast meetings

Jax Cafe, Minneapolis  
9 a.m. Mar. 25, Sept. 23, Dec. 2

### Duluth area Retirees meetings

9:30 a.m., Miller Hill Mall food court, Duluth  
First Wednesday of each month

### Executive Committee meeting

312 Central Ave., Minneapolis  
9 a.m. April 9, Oct. 1

### Semiannual Meeting-All of Minnesota & North Dakota

312 Central Ave., Minneapolis  
10 a.m. April 10, Oct. 2

### Chapter 1 Apprenticeship

Banquet: Jax Café, Minneapolis  
6 p.m. April 29

### BAC Golf Tournament: Pheasant

Acres, 7 a.m. July 31

### Chapter 3 area:

Grandview  
Golf Links, Duluth  
8 a.m. Sept. 11



# QUARTERLY UPDATE

Quarterly Update is published four times a year by Bricklayers & Allied Craftworkers Local 1 Minnesota/North Dakota to communicate with its members.

Postmaster: Send address corrections to Bricklayers & Allied Craftworkers Local 1 Minnesota/North Dakota, 312 Central Avenue, Suite 328, Minneapolis, MN. 55414.

President . . . . . Jim Lundquist  
Editor . . . . . Patricia Johnson  
Design & Production . . . . . Peggy Zetah

## QUARTERLY UPDATE

Bricklayers & Allied Craftworkers  
Local 1 Minnesota/North Dakota  
312 Central Avenue, Suite 328  
Minneapolis, MN 55414



Presorted  
First-Class Mail  
U.S. Postage  
**PAID**  
Permit #4140  
Minneapolis, MN

## GOVERNMENT



### POLITICS — Our Issues

By Shar Knutson,  
President of the  
Minnesota AFL-CIO

## Health Insurance Reform: Rx for a Sick System

Thank you for inviting me to continue this column. In the two months that have passed since I was sworn in, the struggle for affordable health care for all Americans has really heated up.

As I write this, union members across our state and throughout the country are celebrating the passage of a historic health insurance reform bill in the US House. But, by the time you read this, the US Senate will likely be involved in its own health insurance reform debate.

Although some observers are predicting a long-drawn out Senate debate, I'm betting on President Obama. Here's what he said about the next steps in the campaign for affordable health care for all:

*"I am absolutely confident [that the] United States Senate will ... pass its version of the legislation... and I look forward to signing comprehensive health insurance reform into law by the end of the year."*

We are nearing the end of an epic  
12 • DECEMBER 2009 QUARTERLY UPDATE



60-year campaign for affordable health care for all Americans—and we will get there by the end of the year if we all call our Senators—Al Franken and Amy Klobuchar—to encourage them to support health insurance reform—and affordable health care for all Americans.

Tell them that you are a member of Bricklayers and Allied Craftworkers and that you need them to support key elements of health insurance reform. Those elements are:

- ◆ **A public health insurance option** Giving all of us the opportunity to purchase government-backed health coverage will force the insurance industry to compete for our business
- ◆ **An employer pay or pay option** Requiring all employers to pay their fair share for workers' health insurance coverage means that good employers will not be forced to

pick up costs for slackers like Wal-Mart

### ◆ NO tax on existing health benefits

Union members who have negotiated for good health insurance coverage will not pay taxes on their benefits

Please call today:

Senator Amy Klobuchar  
Washington DC: 202-224-3244  
Minneapolis office: 1-888-224-9043

Senator Al Franken  
Washington DC: 202-224-5641  
St. Paul office: 651-221-1016

*Shar Knutson, president of the St. Paul Regional Labor Federation, was elected on August 17 to lead the*

Four Minnesota Congress people voted for the HR 3962—the Affordable Health Care for All Americans bill:

Rep. Tim Walz—First Congressional District

Rep. Betty McCollum—Fourth Congressional District

Rep. Keith Ellison—Fifth Congressional District

Rep. Jim Oberstar—Eighth Congressional District

300,000 member Minnesota AFL-CIO.  
Her bio can be seen on page 5.