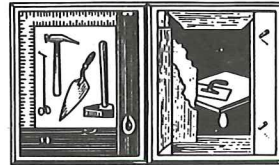


QUARTERLY UPDATE

- Bricklayers
- Stone Masons
- Tile Layers
- Marble Masons



- Blocklayers
- Finishers
- Shopmen
- Cement Masons

- Pointers - Cleaners - Caulkers • Concrete Products Specialists

VOLUME 9, NUMBER 4

DECEMBER 2001

High atop the St. Paul Cathedral...

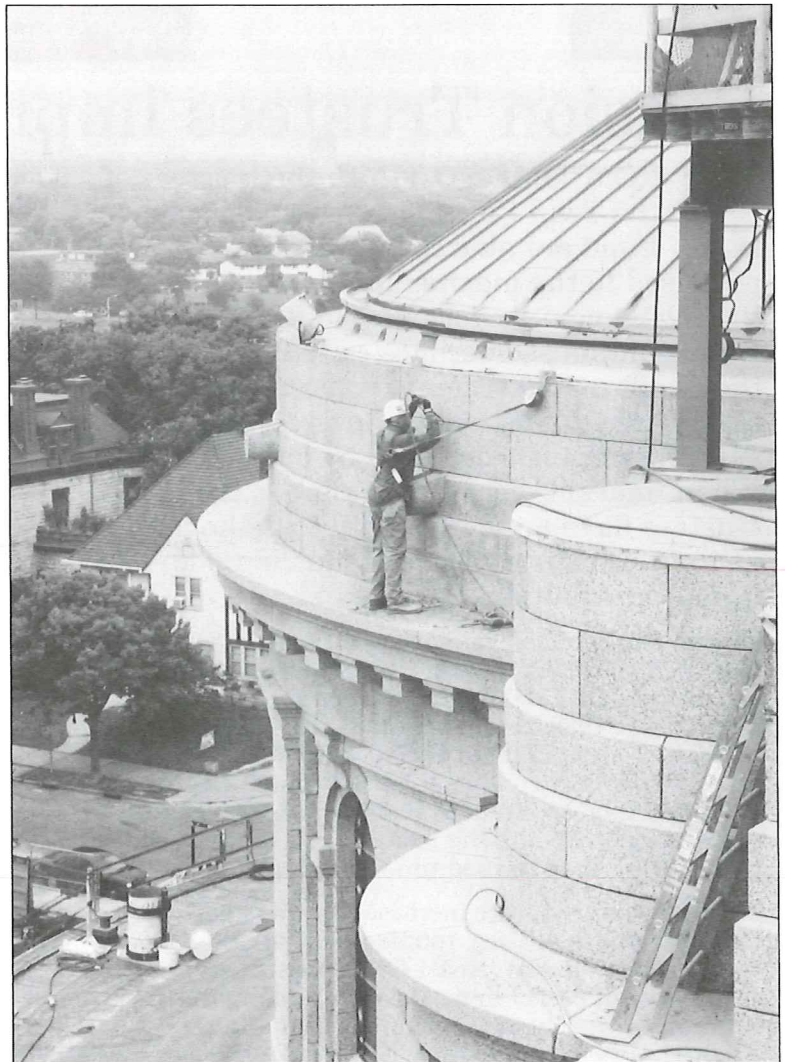
*Restoration of roof
is a unique and
humbling experience*

ALL SUMMER AND FALL, the Cathedral of St. Paul has been an arresting sight, wrapped in scaffolding and cordoned with yellow safety tape.

One of the most impressive sights has been men apparently crawling the face of the 85-year-old building, safety lines tied off, at work on the granite blocks.

These are bricklayers, members of BAC Local 1.

Teams that have numbered as high as 35 workers have been replacing mortar between 18-inch-high by four-foot-wide



Bricklayer Quinn Erickson wore a safety harness as he worked at replacing mortar on the \$35-million Cathedral of St. Paul project. -Photo by Bill Moore

Please turn to CATHEDRAL on Page 10

KEEP IN TOUCH

LOCAL TELEPHONES
612-379-2966 AND 612-379-4230
OUTSTATE TELEPHONE
1-800-257-8636
FAX
612-379-8754

INSIDE QUARTERLY UPDATE

BENEFITS & HEALTH: Pension trustees improve plan again/**2-3**
COMMENTARY: Health, welfare costs keep rising/**4**
BRIEFS: Don't forget to pay your dues!**/6**
IMI: Designers learn by doing at convention/**7**
CALENDARS: Check important 2001 & 2002 dates/**11-12**



B E N E F I T S & H E A L T H



By James Lundquist
Executive Vice President

The fund's investment performance provides a bonus for members.



By Mike Cook
Vice President

Pension Trustees improve benefits again

FROM TIME TO TIME, the trustees of the Twin City Bricklayers Pension Fund are able to improve the benefits promised to the membership as a result of the investment performance of the fund. Extra funding, sometimes called "margin," is the result of investment performance that exceeds the funds long-term investment assumptions, as calculated by our actuaries. When "margin" becomes available, the trustees have an opportunity to make benefit improvements without requiring additional contributions to the fund.

Margin has become available, and the trustees have improved your benefits. For participants who retire on or after Jan. 1, 2002, the "accrual rate" for service from Jan. 1, 1988, through Dec. 31, 1995, will increase from \$122.25 to \$130.00. The benefit accrual rate for service from Jan. 1, 1996, through Dec. 31, 1999, will increase from \$126.50 to \$130.00. The "accrual rate" reflects the monthly amount earned for work during the specified time periods.

These new accrual rate increases apply to participants who have at least 160 hours of service after May 1, 2001, have at least 1,600 hours of service in the 60-month period immediately preceding retirement and whose benefits commence on or after Jan. 1, 2002.

Retirees to receive bonus

Retirees have some exciting extra benefits that have been approved by the Board of Trustees based upon superior investment results: The Board of Trustees has declared a \$500 bonus.

A check will be sent to all retired participants and their beneficiaries in payment status as of Dec. 31, 2001, on approximately Sept. 1, 2002.

The trustees caution that this bonus check is avail-

able because of the particular circumstances at this time, and that bonus checks are not a regular part of the plan. When circumstances are appropriate, the trustees can declare a bonus to retired participants, but there is no schedule that these bonus checks fol-

low. Historically, the trustees have alternated between cost-of-living raises and bonus checks, depending on the available funding.

The funding for this bonus comes as a result of the strong investment performance of the pension plan. Even though the stock market has been up and down recently, the bond portion of the plan's investments has been performing exception-

ally well. Additionally, the plan's actuary recognizes gains and losses over a five-year period. Some gains from prior years have now been recognized, giving the plan the money necessary to provide these extra benefits for our retirees.

Trustees considering defined contribution pension

The Board of Trustees of the Twin City Bricklayers Pension Plan is considering the adoption of a new type of pension for bricklayers. This new type of plan, called a "defined contribution" plan would supplement, but not replace, the current "defined benefit" plan sponsored by the Union and contributing employers.

A defined contribution plan looks like a savings

A check will be sent to all retired participants and their beneficiaries in payment status as of Dec. 31, 2001, on approximately Sept. 1, 2002.

Please see next page

BENEFITS & HEALTH

Continued from previous page

account. Individual participants have an account balance based on contributions to their accounts. There is no guarantee regarding earnings or how long the money lasts, but distribution options are generally more flexible than the current style of pension, known as a defined benefit fund.

The union will be discussing these styles of pensions with the membership to get their input. Watch for notices.

A defined benefit fund is a lifetime stream of income. Lump sum distributions are available under a defined contribution plan; they are not available under a defined benefit plan. Benefits can't run out under a defined benefit plan; they can run out under a defined contribution plan. Each plan has strengths and weakness, but a combina-

tion of the two will provide the best of each to BAC Local Union #1 families.

The Union will be discussing these styles of pensions with the membership to get their input regarding the desirability of starting this new type of pension account. Watch for notices regarding these discussions at upcoming membership meetings throughout the state.

Where did welfare hours go?

The phone starts to ring at the office every time the contribution rate for the health and welfare fund changes. Members ask, "Where did some of my hours go? My last fund statement showed I had more hours in my bank, and now there looks to be some hours that are missing! I know I have been fully employed, and have not used bank hours. Is my employer reporting my hours properly?"

All the contributions received on your behalf are still there, but you have been "indexed." What does that mean? The payment for health and welfare contributions needs to occur at the current rate for the fund to balance the books. When the contribution rate for the fund changes, the number of hours in each member's bank needs to be adjusted to reflect the rate of future payment to the fund. Simply stated, the old rate paid in is insufficient to keep the books in balance. The new contribution rate needs to be collected for the fund to operate in "the black," and therefore the trustees need to convert the value of your hour bank from the old rate to the new rate.

Indexing is one means for the Board of Trustees to be able to assure that the predictions regarding the income for the fund remain accurate. Though none of us like to see the numbers in our hours bank decrease, the full value of the contributions the fund has received on your behalf are still banked, and ready to help provide continuous insurance coverage for BAC Local Union #1 families.

International pension update

The International Pension Fund (IPF) Board of Trustees has adopted significant benefit improvements, including a 5 percent across-the-board increase in the IPF benefit formula that accrues based on a local union's hourly IPF contribution rate. This improvement applies to all active participants who have earned at least one hour of service after Jan. 1, 2001 and retire on or after Nov. 1, 2001.

In addition, the pension application filing requirement – the length of time before the first payment is received – has been reduced from two months to one.

All retirees over age 64 who worked in the year 2000 will receive a cost-of-living increase based on their employment last year. This increase will appear on their November benefit payment retroactive to February 2001. The issue of an across-the-board increase for all IPF retirees and beneficiaries, along with other possible benefit improvements, remains under review.

More details on these changes will be coming in the IU Journal.

Dues suspended during duty

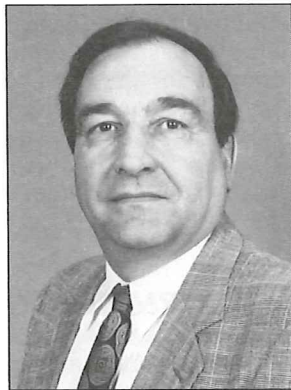
War on terrorism leads to revival of the policy.

America's war on terrorism and the possibility that BAC members may be called to active duty has prompted the International

Union to reinstate a policy first implemented in the Gulf War. In a Sept. 26 decision, the IU Executive Board moved to free members serving in the armed forces from having to pay dues. The decision applies to all active members of the armed forces serving on or after Sept. 11, 2001, and to all military reservists called to active duty since Sept. 11, regardless of where they are serving. The suspension of dues is to end six months after the U.S. President declares this emergency to be ended. The executive board of BAC Local #1 has decided it will follow the same guidelines, and will suspend local dues for the same period.

COMMENTARY

NEWSPAPER headlines recently declared, "Experts are predicting that 2002 will bring a fourth consecutive year of double-digit health insurance premium increases." Daily, the media issues warnings about the rapid increase in the cost of health insurance, particularly for those policies that provide prescription drug coverage. The Board of Trustees of the Twin City Bricklayers Health and Welfare Fund have fought, during these past years, to control health plan costs while providing the highest quality coverage for BAC families.



GARY GOBLIRSCH SAYS...

Health, welfare costs continue upward spiral

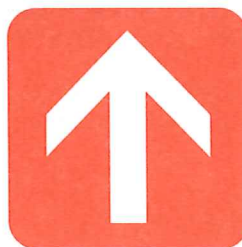
We have met with great success. The last time that retiree health care premiums increased was in 1998. The double-digit increases in the cost of health care for BAC retirees and their families has been absorbed, in large part, by careful cost controls by the Board of Trustees, investment earnings from plan reserves and innovative arrangements with medical providers.

The reality of health care cost inflation now dictates that the premiums for retiree coverage, which are surging forward nationally at about double the pace of active members' coverage, rise to meet these costs. The Board of Trustees is sensitive to the fact that many retired BAC members live on fixed incomes, and that any premium increase may result in hardship. However, the plan trustees, under federal law, have a fiduciary duty to act in the best long-term interest of all BAC members; the need to keep pace with cost increases is clear.

Active members have seen only modest increases in the contribution rates for health care. In light of the

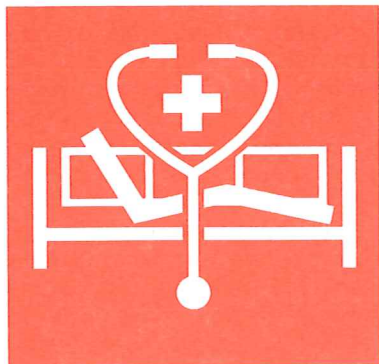
rapid increase in health care costs the Board of Trustees of the Health and Welfare Fund has directed, based on the advice of the Fund's actuary, that the active contribution rate for the plan, effective May 1, 2002, increase by \$.15 per hour for the cost of medical care and \$.05 per hour to provide an additional cushion for the pre-funded retirement program.

Also, effective Jan. 1, 2002, all premiums for retiree health care coverage (both pre- and post-Jan. 1, 1998, coverage) will increase by seven percent (7%). Your next billing for your coverage will reflect this increase.



Although the cost of health care continues to rise, the Twin City Bricklayers Health and Welfare Fund has always offered insurance that represents a tremendous value. The self-insured program lowers the cost per person for administration; there is no "middle man" to take a profit. All of the

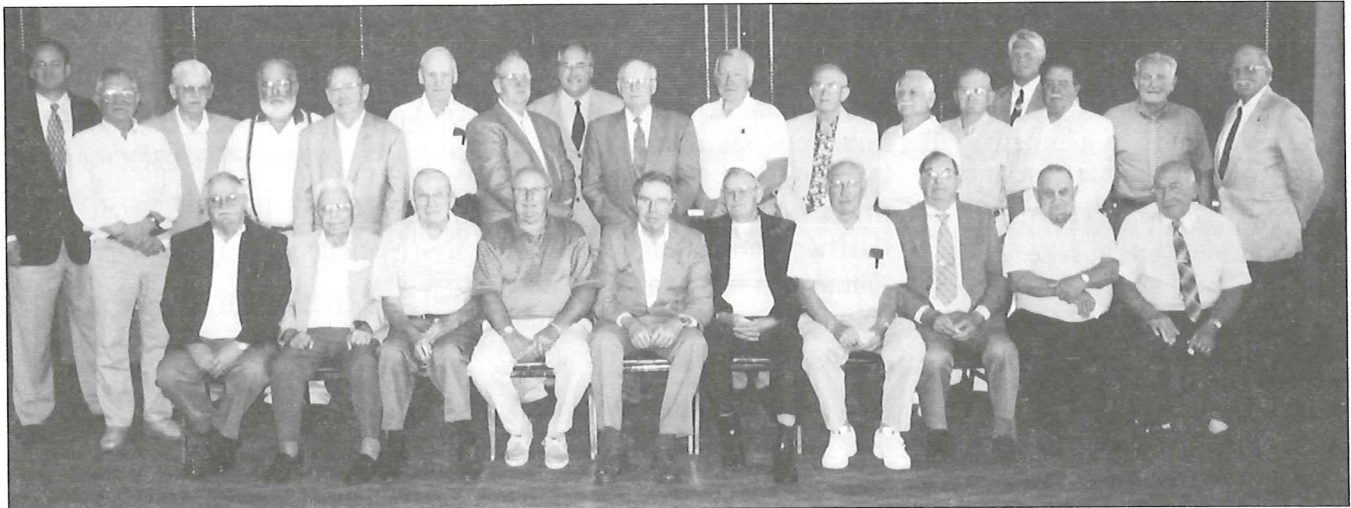
contributions and earnings for the fund directly provide benefits to the membership and their families, or pay the modest cost of administration for the plan. Through these cost-effective methods, the Twin City Bricklayers Health and Welfare Fund has been a trendsetter in bringing quality and value to the hard-working trades workers affiliated with Bricklayers and Allied Craftworkers, Local No. 1 of Minnesota.



We have met with great success. The last time that retiree health care premiums increased was in 1998. The double-digit increases in the cost of health care for BAC retirees and their families has been absorbed, in large part, by careful cost controls by the Board of Trustees, investment earnings from plan reserves and innovative arrangements with medical providers. – Goblirsch

H O N O R E D

Longtime members of Bricklayers Chapters 1 and 2 and Tilesetters Chapter 18 were honored Aug. 16 in a Gold Card luncheon held at the Thunderbird Hotel in Bloomington.



New 50-year members (top photo) were, in the front row, William Palmer, Phil Shayda, Richard Hudson, Bill Hoffmeister, Ed Knowlan, Ted Golla, Ambrose Zimmerman, Leonard Iskierka, Gilbert Boehmer and Del Breun. In the back row, left to right, are Mike Cook, Carl Koch, Bob Julkowski, Gerald DeGray, Jerry Lantry, Nick Gergen, John Larson, Gerald O'Malley, Leroy Psyk, Leroy Lenz, John Ehrnreiter, George Curwick, Loren Seidel, Jim Lundquist, Reuben Weise, Allen Engrebretson and Randy Kelly.



Honored 40-year members (photo at left), left to right in the front row, were Howard Finley, Earl Lavoy, Nick Miklya, Joe Seviola, Lee Ketcher, and Norm Bunting. In the back row, again, are Cook, Lunquist, O'Malley and Kelly.



Left to right, 25-year members were, in front row, Ron Miklya, Tom Kraft, Joe Laplante, Keith Lanier, Steve Youngstrom, and Craig Jones. In back row were Local #1 Vice President Mike Cook and Executive Vice President Jim Lundquist, International Union Executive Vice President Gerald O'Malley, and Region 7 Director Randy Kelly.

B R I E F S

DULUTH - HIBBING - VIRGINIA

Health and welfare informational meet slated in Duluth

Questions about the Twin City Bricklayers Health and Welfare Fund, and the possibility of Chapter #3 members joining it, will be addressed at an informational meeting Jan. 24, 2002, in Duluth.

Fund attorney Pete Rosene and officers of Local #1 will be on hand to answer questions. All Chapter #3 members (Duluth area and Hibbing-Virginia area) and their spouses are welcome to attend. The meeting will be held at 7 p.m. at the Duluth Labor Center, Hall A.

Meeting Place Changes for Chapters #1 and #2

All regularly scheduled chapter meetings for Chapters #1 and #2 during 2002 will be held in St. Paul at the Labor Center, 411 Main Street at 7 p.m.

Please refer to the calendar (Pages 11 and 12) for meeting dates.

Out of work?

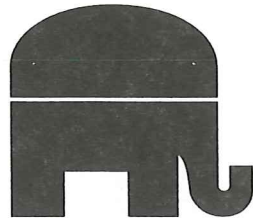
Please call the office, 612-379-2966. We have calls!

Dick Burt Resigns

Dick Burt has resigned as Chapter Chairman of St. Paul chapter #1. Mark Wickstrom has been appointed by President Gary Goblirsch to serve the remainder of the term.

Stone training classes

Stone training classes will be offered beginning January 7, 2002. This class will meet from 6 to 9 p.m. Mondays and Wednesdays. To register, call Mark Wickstrom at the Apprenticeship Training



Don't forget to pay your dues!

Or you can have them deducted from your vacation account. The Management Committee of the Bricklayers and Allied Craftworkers Local #1 of Minnesota has started a new voluntary program to pay dues through the vacation fund.

This program is only for members whose crafts participate in the Twin City Bricklayers Vacation Fund. It does not include the Duluth and Hibbing-Virginia area bricklayers, Duluth and Rochester area Tile members or members who work for the Marble shops.

Call the Local Union for details.

Center, 651-228-2952.

Slips to be mailed

Verification slips for July, August and September will be mailed Dec. 15.

Retiring?



If you're considering retiring, please contact the Union office three months in advance to fill out the necessary papers.



www.wordayminnesota.org

For the most up-to-date labor news in Minnesota, visit the Workday Minnesota Web site – a cooperative effort of the Labor Education Service at the University of Minnesota and the Minnesota AFL-CIO.

Updated daily, the labor news service features information about union and workplace activities; in-depth articles on history, the economy and other topics; materials on labor for use in classrooms; and links to many other sites. It also is interactive through a bulletin board on which readers can share information and viewpoints.

INTERNATIONAL MASONRY INST.

IMI Corner



DESIGNERS LEARN BY DOING

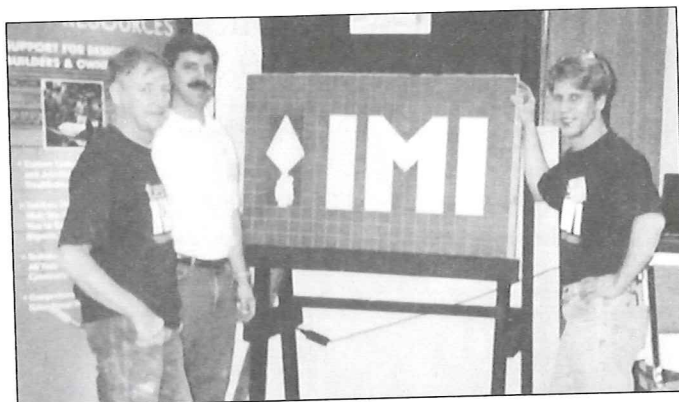
The ancient philosopher, Confucius, said, "I hear and I forget. I see and I remember. I do and I understand." Nowhere is that more appropriate than with masonry. It's imperative for those designing with the material to understand it in order to apply it correctly. And designers in Duluth and the Twin Cities had opportunities in October to do just that.

On Oct. 2, Harbor City Masonry in Duluth hosted 30 architects, engineers and specifiers for an afternoon of classroom and hands-on activity, all centered on solving job-site problems from the viewpoint of the mason on the job. Dave Grandaw, Mark Wickstrom, and Mike Cook, all with the BAC Local #1 staff, and Olene Bigelow from the IMI Minnesota Area Office, led the three-hour program.

Participants were required to find a problem in the plans, and then solve it. A contract documents challenge provided participants with yet another "real-life" job-site problem that needed solution. And there were installation problems involving hands-on activities that gave all the participants a chance to get a taste of what the mason and contractor deal with every day.

"Wow," said one of the participants. "It sure makes you think twice about what you put on the plans."

The AIA Minnesota Convention provided another recent opportunity for learning by doing, this time with ceramic tile. Mike Hawthorne with BAC Local #1 Minnesota staff, along with Lloyd Swanson and Kjell Schafer, with Twin City Tile and Marble, Rick



Lloyd Swanson, Mike Hawthorne and Kjell Schafer participated in the AIA Minnesota convention in Minneapolis. ANOTHER PHOTO AND STORY ON PAGE 9.

Martagon with Grazzini Brothers, and Olene Bigelow spent the better part of three days teaching convention participants the keys to successful ceramic tile design and installation. Activities in the booth gained an award from the architects as one of the best booths in the exhibit hall. In addition, Wayne Hoerning, a ceramic tile specialist with IMI gave a presentation on ceramic tile design and technology to a standing-room-only crowd of nearly 200.

Confucius was right. People learn better by doing. It's been the hallmark of union craftworker training in this country for more than 150 years, and architects are no different. With experiences such as these, designers will be much more likely to select masonry over other materials once they have held the materials and the trowels in their hands.

CHILDREN'S CHRISTMAS PARTY SET FOR DEC. 1

Magician...and...Santa, too!



The Amazing Hondo! will entertain at this year's Children's Christmas Party, 9:45 a.m. Saturday, Dec. 1, at 312 Central Ave., Minneapolis.

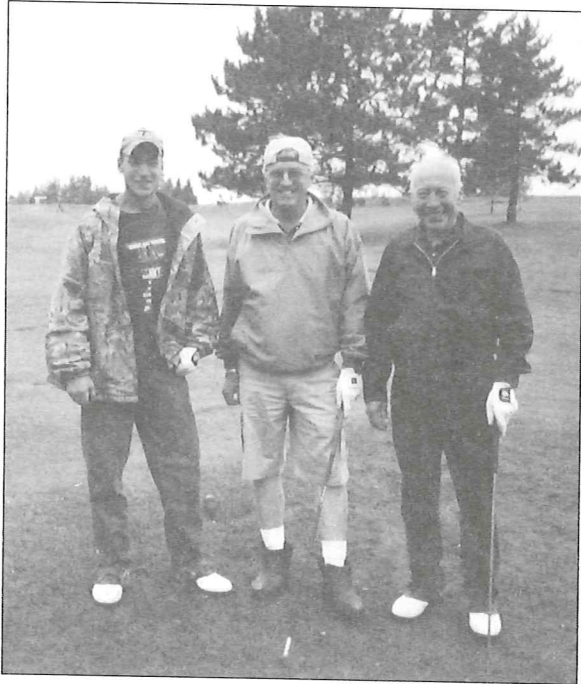
Members of all chapters are invited to bring their children and grandchildren for a magic show presented by this experienced entertainer.

A visit from Santa is expected, too.



Recreation

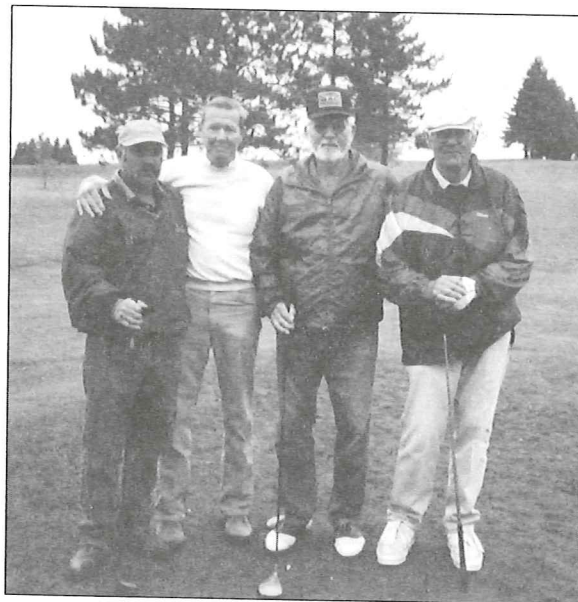
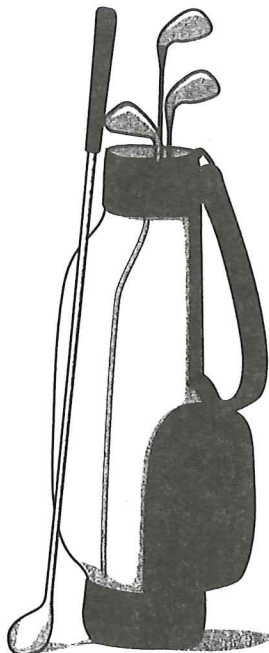
Chapter #3 members held a golf tournament at the Grandview Golf Links golf course in Duluth Saturday, Sept. 8, 2001. Three groups came in at 33, which was par on the 9-hole course. Pictured, left to right, are the winning groups:



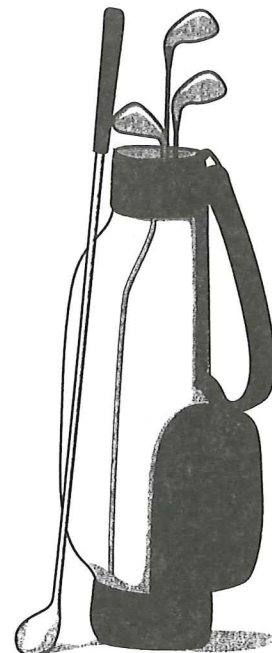
Jason Springer, Dave Grandaw and Rodney Sletten.



Lyle Halverson, Steve Kuhlman, Bruce Winschup and Aaron Smith.



Darrel Schweiger, Richard Johnson, Donald Seabury and Gust Johnson.



MILESTONES

NEW MEMBERS

We welcome these new members...

Sanel Babic
William C. Balck
Vitaliy A. Belokon
Todd A. Bernard
Christopher J. Boettcher
Sharon H. Borgert
Antonio Carreon
Edward F. Conley
Dale C. Criswell
Gabor G. Deli Jr.
Trent N. Dykmann
Travis L. Edwards
Anatoliy N. Filonenko
Chad A. Forsland
Reginald J. Gardner
Reginald T. Glass
Seth A. Goodnature
Andrew S. Goulet
Tait M. Gronli
Timothy C. Hanson
James E. Hawkins

Michael J. Houtsma
Kimberly S. Jackson
Louis C. Jackson
Terrance L. Jackson
Carl C. Johnson
Eric J. Johnson
Tim L. Johnson
Ronald Jones

Ivan V. Kachula
Jay T. Karasch
Joseph L. Kessel
Viktor N. Levitskiy
Robert R. Levy
Kevin C. Lind
Shane P. Mallory
Michael Marold

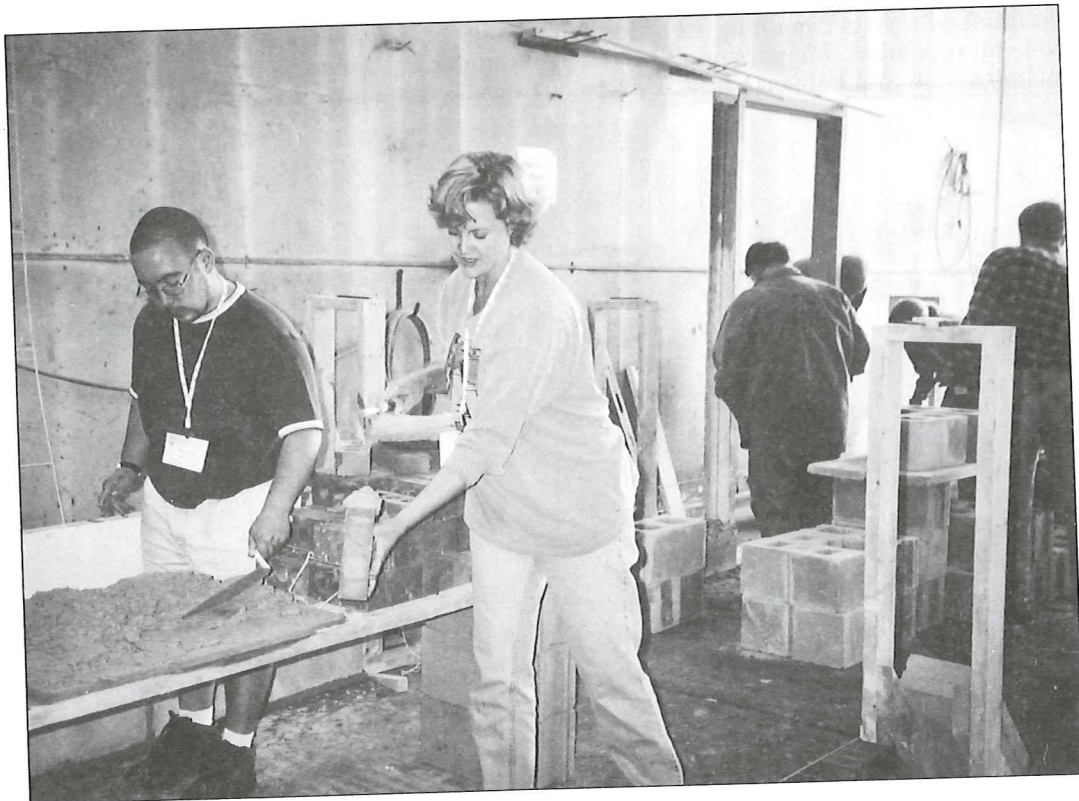
Joshua R. Marshall
James M. Miller
Raymond G. Miller
James R. Mite
Robert S. Morine
Valerly N. Nedorezov
Matt A. Nilsson
Daniel J. Peterson
Aaron B. Phipps
Dorean E. Porter
Donald Roach
Steven L. Rucker
Vladimir M. Savchenko
Craig S. Schulz
Jason E. VanWert
Giovanni Villolobos
Gregory L. Wagner
Sandra K. Wightman
Wilma J. Wilkins
James A. Wolff

DECEASED MEMBERS

We are sorry to report these deaths:

Frank S. Amendola
Ralph Anderson
Richard Biagini Jr.
Verner W. Engebretson
Duane Hanson
Brian J. Meyer

Richard E. O'Connell
Martin A. Olson
Roger A. Peterson
Burnell Reed
Earl Tieman



HANDS-ON

Duluth area architects attended a hands-on seminar at the AIA convention in Minneapolis.
FOR ANOTHER PHOTO AND STORY PLEASE SEE IMI CORNER ON PAGE 7.

FROM THE FRONT PAGE

CATHEDRAL

It's not your average job site

Continued from Page 1

granite blocks. On all four sides, a thin diamond blade is first inserted in the center to a depth of about an inch and a half, then mortar on either side chipped away. The joint then is filled in with new mortar. Plenty of old mortar is left in place; many of the stones are three feet thick.

For much of the job, the worker must step out onto a narrow ledge and work his way around the curve of the dome. Safety lines are kept securely tied, and no one has fallen.

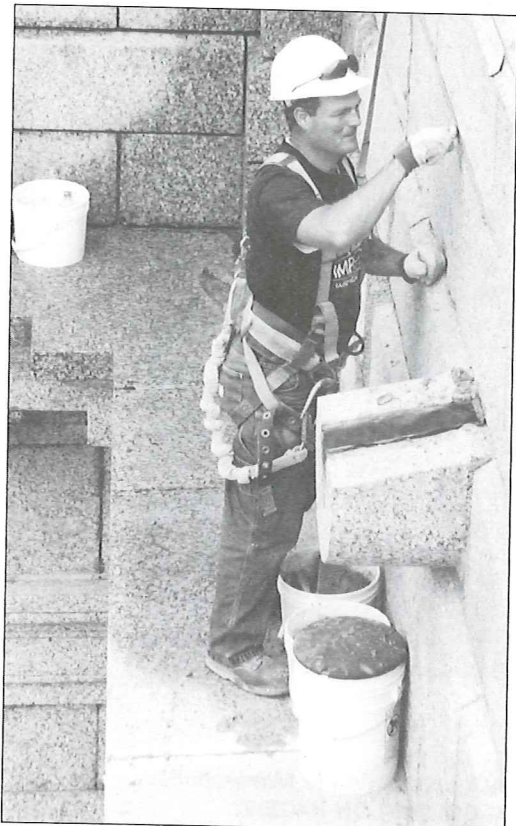
When the job is finished a year from now, 42 miles of joints will have been repointed. It's part of a \$35 million job that includes new roof supports built by car-

penters, new copper sheathing formed and laid in place by sheet metal workers, all done on scaffolding built by ironworkers and carpenters.

Pointers, cleaners and caulkers have been working together to get the job done, says Doug Rose, the Bricklayer supervisor for the contractor, McGough Construction. "The mortar in there is like iron," Rose said. "It's hard to get in there and hard to cut. The repoint is a lot easier on the guys. I think they enjoy that a lot more."

The Cathedral of St. Paul is not your average job site.

"This is a unique job," Rose said, "a hundred-year fix. Just going up there is humbling. It's one of those buildings, you either love it or you don't. If you don't, you don't want to be up there. But the ones who've been there for quite some time, they love it."



Photos by Bill Moore



Bricklayers repointing the Cathedral had to step carefully and wore safety lines secured to the stone

KEEPING UP - 2002



CHECK YOUR CALENDAR FOR IMPORTANT DATES

Please clip the calendar and post it in a convenient spot so it's handy when you want to check meetings and events.

Retirees Club Meetings

9 a.m. Jax Cafe, Minneapolis,
March 21, June 27, Sept. 26, Dec. 5

Chapters #1 & #2—Minneapolis & St. Paul

7 p.m., main floor,
411 Main St., St. Paul
Jan. 14, Feb. 11, March 11, May
13, June 10, July canceled, Aug. 12,
Sept. 9, Nov. 11, Dec. 9

Chapter #3—Duluth-Hibbing

7 p.m., Duluth Labor Center
Jan. 9, March 13, June 12, Sept.
11, Dec. 11.

7 p.m., Hibbing Electricians Hall
Feb. 13, May 8, Aug. 14, Nov. 13

Chapter #4—St. Cloud

7 p.m., St. Cloud Labor Home,
1903 4th St. N., in the basement,
Jan. 2, Feb. 6, March 6, May 1, June
5, July canceled, Aug. 7, Sept. 4,
Nov. 6, Dec. 4

Chapter #6—Springfield-New Ulm

8 p.m., Springfield, American Legion
Hall
Jan. 3, March 7, June 6, Aug. 1, Nov.
7

8 p.m., New Ulm, American Legion
Club, 13 South Minnesota
Feb. 7, May 2, July canceled, Sept.
5, Dec. 5

Chapter #8—Rochester-Faribault

7 p.m., Faribault VFW
Feb. 4, May 6, Aug. 5, Nov. 4
7 p.m., New Rochester Union Hall
11 4th Street, Rochester
Jan. 7, March 4, June 3, Sept. 9,
Dec. 2

Chapter #11—Mankato

7 p.m., Teamsters Hall, Mankato
Feb. 5, March 5, May 7, June
4, July canceled, Aug. 6, Sept. 3,
Nov. 5, Dec. 3

Chapter #15—Brainerd-Bemidji

All meetings will be held at 7 p.m.

**BRICKLAYERS AND ALLIED
CRAFTWORKERS
LOCAL UNION #1 MINNESOTA
CALENDAR OF EVENTS: 2002**

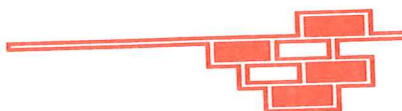
NOTES

- There will be no chapter meetings in April, July and October.
- All chapter nominations will take place at the September chapter meetings.
- Local #1 nominations will be at the October semi-annual meeting.

- Jan. 10 – Moorhead Travel Lodge
- Feb. 14 – Crookston, Northland Inn
- March 14 – Bemidji American Legion
- May 9 – Brainerd Eagles Club
- June 13 – Thief River Falls Eagles Club
- Aug. 8 – Bemidji American Legion
- Sept. 12 – Brainerd Eagles Club
- Nov. 14 – Thief River Falls Eagles Club
- Dec. 12 – Bemidji American Legion

Chapter #18—Tilelayers

7 p.m., second floor
312 Central Ave. SE, Minneapolis
Jan. 8, Feb. 12, March 12, May 14,
June 11, July canceled, Aug. 13,
Sept. 10, Nov. 12, Dec. 10



Other Events:

Semiannual Meetings for All Chapters – Statewide
10 a.m. second floor
312 Central Ave. SE, Minneapolis
Apr. 6, Oct. 4

Executive Committee Meetings
10 a.m. Apr. 4, Oct. 3

**Bricklayers and Allied
Craftworkers Golf Tournament**
Saturday, July 27

Children's Christmas Party
9:45 a.m. second floor,
312 Central Ave. SE, Minneapolis
Dec. 7, 2002

Apprenticeship Banquet
Chapters #1 & #2 & #18 Tile
Thursday, Apr. 25

Gold Card Dinners (cards will be mailed)
Chapters #1 & #2 & #18 Tile –
Aug. 15
Thunderbird Hotel, Bloomington

Chapter #3—Duluth – Oct. 12
Holiday Inn, downtown Duluth

Chapter #3—Hibbing-Virginia –
Oct. 11
Knights of Columbus, Hibbing

Chapter #4—St. Cloud – March 9
Eagles Club

Chapter #6—New Ulm-Springfield
– April 27
Springfield Legion

Chapter #8—Rochester – June 7
Holiday Inn, downtown Rochester

Chapter #8—Red Wing (Old #17)
– October 12
Wiederholt's, Miesville

Chapter #11—Mankato – April 26
Holiday Inn, downtown Mankato

Chapter #15—Brainerd-Bemidji –
June 22
Breezy Point Resort, Brainerd

QUARTERLY UPDATE

Quarterly Update is published four times a year by Bricklayers & Allied Craftworkers Local #1 of Minnesota to communicate with its members.

Postmaster: Send address corrections to Bricklayers & Allied Craftworkers Local #1 of Minnesota, 312 Central Avenue, Suite 328, Minneapolis, MN. 55414.

President.....Gary Goblirsch
Editor.....Merrily Helgeson
Design & Production.....W. F. Cento

QUARTERLY UPDATE

Bricklayers & Allied Craftworkers
Local #1 of Minnesota
312 Central Avenue, Suite 328
Minneapolis, MN 55414



Presorted
First Class
U.S. Postage
PAID
Permit #4140
Mpls, MN

QUARTERLY UPDATE • DECEMBER 2001

KEEPING UP - DECEMBER 2001



CHECK YOUR CALENDAR FOR IMPORTANT DATES

Please clip the calendar and post it in a convenient spot so it's handy when you want to check meetings and events.

Chapters #1 and #2 - Minneapolis & St. Paul
7 p.m. Second Floor,
312 Central Ave. SE, Minneapolis
Dec. 10

Chapter #3 - Duluth-Hibbing
7 p.m., Duluth Labor Center
Dec. 12

Chapter #4 - St. Cloud
7 p.m., St. Cloud Labor Home,
1903 4th St. N., in the basement
Dec. 5

Chapter #6 - New Ulm
8 p.m. American Legion Club,
13 South Minnesota
Dec. 6

Chapter #8 - Rochester-Faribault

**BRICKLAYERS AND ALLIED
CRAFTWORKERS
LOCAL UNION #1 MINNESOTA
CALENDAR OF EVENTS: 2001
See Page 11 for 2002 Calendar.**

7 p.m., New Rochester Union Hall,
11 4th Street, Rochester, MN.
Dec. 3

Chapter #11 - Mankato
7 p.m., Teamsters Hall
Dec. 4

Chapter #15 - Brainerd-Bemidji
7 p.m., Brainerd Eagles Club
Dec. 13

Chapter #18 - Tilelayers
7 p.m., Second Floor,

312 Central Ave. SE, Minneapolis
Dec. 11

Other events

Retirees Club Meetings
9 a.m., Jax Cafe, Minneapolis,
Dec. 6

Children's Christmas Party
All Chapters - Statewide
9:45 a.m. Second Floor
312 Central Ave. SE, Minneapolis
Dec. 1

Gold Card Dinners
Chapter #3 - Duluth - December 8
Holiday Inn - Downtown Duluth
Chapter #3 - Hibbing - Dec. 7
Knights of Columbus

The commanding officer of Minnesota's Air and Army National Guard will address retirees at their next breakfast meeting, Dec. 6. The Retirees Club will meet at 9 a.m. at Jax Café in Minneapolis.

Maj. Gen. Eugene R. Andreotti, Adjutant General for the State of Minnesota, will speak on the role of the National Guard in the U.S. military system, and the current role of the National Guard in the war in Afghanistan.

Gen. Andreotti, a Bloomington resident, graduated from Alexander Ramsey High School in 1961 and earned a degree from the University of Minnesota in 1966. He commands more than 12,000 members of the Minnesota Air and Army National Guard, a command that includes an infantry division headquarters, an Army garrison unit, two major flying units, and bases in St. Paul and Duluth.